

MONTHLY  
FREE PATTERN





# FLOWER CARDIGAN

1713, NO. 1 / CARDIGAN W/SLEEVECAP AND FLOWER PATTERN / INSTRUCTION: ANITA BRATHETLAND

## SIZES

(XS) S (M) L (XL) XXL

## MEASUREMENTS

Bust: (85) 93 (102) 111 (115) 123 cm  
Length: ca (50) 51 (53) 54 (56) 58 cm  
Sleeve length: 47 cm, or suitable length.  
All measurements are for the finished garment = personal body measurements + movement allowance. The measurements are all according to given tension.

## YARN

SISU (80% wool, 20% nylon, 50 g = approx 175 m)

## ALTERNATE YARN

MINI ALPAKKA, MANDARIN PETIT, ALPAKKA SILKE, TYNN MERINOULL, BABYULLANETT

Note! If alternate yarn is chosen be sure to check the yardage on label. The image of garment might change by using alternate yarn.

## YARN REQUIRED

Corn yellow 2015/Blue melange 6324: (200) 200 (250) 300 (350) 400 gram  
Natural 1012/Natural 1012: (150) 200 (200) 250 (250) 300 gram

## NOTIONS

(8) 8 (8) 9 (9) 8 buttons

## SUGGESTED NEEDLE SIZES

Circular and double pointed ndls no 2½ and 3  
Needle sizes are only suggestions. If your knitting shows tighter tension, use thicker needles, for looser tension use thinner needle

## TENSION

28 sts St-st with ndls no 3 = 10 cm

## EDGE ST: K EVERY ROW

## FRONT AND BACK

With corn yellow/blue melange and circ ndls no 2½ cast on (245) 271 (295) 321 (333) 359 sts and work 4 cm ribbing back and forth as follows: (1st row = WS) Work 1 edge st, p1, \*k1, p1\*, rep from \*-\*, end with 1 edge st.  
Change to circ ndls no 3.  
Cast on 5 new sts at end of row (= cutting sts. These sts are not included in pattern or given number of sts).  
Work 1 rnd St-st and at the same time dec (16) 18 (18) 20 (20) 22 sts evenly spaced = (229) 253 (277) 301 (313) 337 sts.  
Mark sides with (56) 62 (68) 74 (77) 83 sts for each front and (117) 129 (141) 153 (159) 171 sts for the back.  
Cont with diagram in rnds until work meas (34) 35 (36) 36 (37) 38 cm.

Cast off (8) 10 (10) 12 (12) 14 sts at each side for armholes (= (4) 5 (5) 6 (6) 7 sts at each side of markers).

Work each part separately

First and last st on row are edge sts. K edge st every row. Work edge st with both yarn colors. In this way the pattern will look nicer when working back and forth.

## BACK

= (109) 119 (131) 141 (147) 157 sts.  
Cont diagram back and forth and cast off (3,3,2,1,1,1) 3,3,3,2,1,1 (4,3,3,3,2,2,1,1) 4,4,3,3,2,2,2,1,1 (4,4,3,3,3,2,2,1,1,1) 4,4,3,3,3,3,2,2,1,1,1 sts at beg of every row at each side for armholes = (87) 91 (93) 97 (99) 103 sts.

Cont diagram until work meas (48) 49 (51) 52 (54) 56 cm.  
Transfer the (43) 45 (47) 49 (51) 53 center sts for neck to a st holder and work each part separately. Cast off 2,2,1 sts at neck every other row.  
Cont until work meas approx (50) 50 (52) 54 (56) 58 cm, ending with a full or half flower  
Cast off rem (17) 18 (18) 19 (19) 20 shoulder sts.  
Work other side the same but mirror image.

## FRONT

= (104) 114 (126) 136 (142) 152 sts.  
Beg at one side.  
Work and cast off for armhole in the same manner as for the back = (82) 86 (88) 92 (94) 98 sts.  
Cont diagram until work meas (44) 45 (47) 48 (50) 52 cm.  
Cast off the (25) 27 (29) 31 (33) 35 center sts for neck (including cutting sts).  
Cont to cast off at neck every other row 3,2,2,1,1,1,1,1 sts.  
Cont until work meas (50) 51 (53) 54 (56) 58 cm, ending with a full or half flower  
Cast off rem (17) 18 (18) 19 (19) 20 shoulder sts.  
Work other side the same but mirror image.

## SLEEVES

With corn yellow/blue melange and double pointed ndls no 2½ cast on (52) 54 (56) 58 (60) 62 sts. Join and work 4 cm ribbing k1, p1 in rnds. Change to double pointed ndls no 3.  
Mark first and last st on rnd.  
Work diagram, count from center of sleeve where to beg diagram and inc 1 st at each side of marker approx every (2½) 2½ (2) 2 (1½) 1½ cm until (82) 86 (92) 98 (102) 106 sts on ndls.  
Work new sts in diagram as they appear.  
Cont until work meas 47 cm, or suitable length  
Cast off (8) 10 (10) 12 (12) 14 sts at center under sleeve (= marked sts + (3) 4 (4) 5 (5) 6 sts at each side of this).  
Cont diagram and cont to cast off at beg of every row 3,3,2,2,1,1,1,1,1,1,1,1,1,1,2,3,4 (3,3,2,1,1,1,1,1,1,1,1,1,1,1,2,3,3) 3,3,2,2,1,1,1,1,1,1,1,1,1,1,1,1,1,1

,2,3,4 (3,3,2,2,1,1,1,1,1,1,1,1,1,1,1,1,2,3,4) 3,3,2,2,1,1,1,1,1,1,1,1,1,1,1,1,1,2,2,3,4 (3,3,2,2,1,1,1,1,1,1,1,1,1,1,1,1,1,1,2,3,4) sts = (30) 30 (33) 34 (36) 36 sts at each side  
Cast off rem (14) 16 (16) 18 (18) 20 sts.  
Work other sleeve the same.

## FINISHING

With machine and small sts sew 2 seams at each side of center front. Cut between. Sew shoulder seams.

### Left front band:

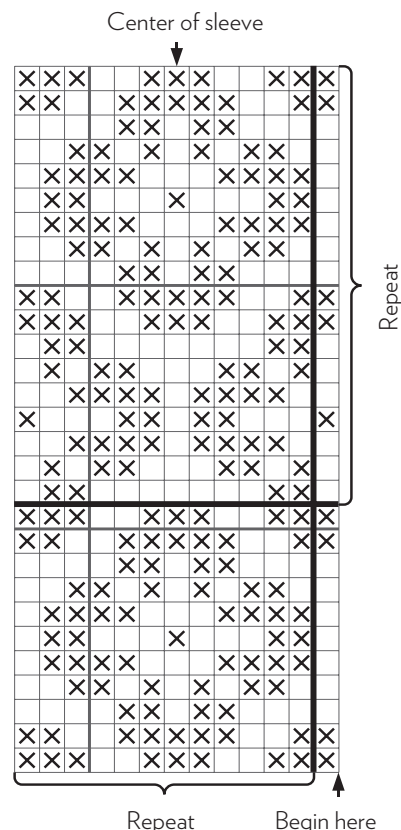
With corn yellow/blue melange and circ ndls no 2½ knit up 1 st every row but skip every 4th row at front edge to approx. (111) 113 (117) 121 (127) 133 sts.

Number of sts a multiple of 2+1. Work 3 cm ribbing as front and back  
Cast off in ribbing.

### Right front band:

Work as left front band but with (8) 8 (8) 9 (9) 9 buttonholes evenly spaced after approx 1 cm. The lower 2 cm from cast on edge, the upper at neckband and this will be worked later.

Buttonhole: Cast off 2 sts. Next row: Cast on 2 sts over the cast off sts.



□ Corn yellow/Blue melange  
X Natural

Facing:

From WS and with corn yellow/blue melange and circ ndls no 2½ knit up 1 st every st on first row of front band.

Work 7 rows St-st back and forth.

Cast off.

Fold facing over cut edge and sew with invisible sts on WS.

Neckband:

With corn yellow/blue melange and circ ndls no 2½ knit up 1 st every st/row but skip every 4th st/row to approx (129) 133 (137) 141 (145) 149 sts.

Number of sts a multiple of 2+1.

Work 3 cm ribbing as front and back.

Remember last buttonhole in line with the others.

Cast off in ribbing.

Sew in sleeves. Sew on buttons.

