



No 2

PELLE
SWEATER*Raglan sweater w/pattern*
*Instruction: Anita Brathetland***Sizes:**

(2) 4 (6) 8 (10) 12 yrs

Measurements:

Chest width: (64) 69 (73) 77 (81) 86 cm

Length: (36) 40 (44) 48 (50) 52 cm

Sleeve length: (24) 28 (31) 34 (37) 40 cm, or suitable length

All measurements are for the finished garment = personal body measurements + movement allowance. The measurements are all according to given tension.

Yarn:SUNDAY (100% merino wool,
50 g = 235 m)**Yarn required:**

Putty #1015: (2) 2 (3) 3 (4) 4 balls

Dk.grey-blue #6581: (1) 2 (2) 2 (3) 3 balls

Dusty pastel green #8521: (1) 1 (1) 2 (2) 2 balls

Suggested knitting needles:

Circular and double pointed 2.5 mm and 3 mm

Needle sizes are only suggestions. If your knitting shows tighter tension, use thicker needles, for looser tension use thinner needle

Tension:

28 sts St-st with 3 mm ndls = 10 cm

Sleeves:

With putty and 2.5 mm double pointed ndls cast on (44) 46 (48) 50 (52) 52 sts. Join and work (3) 3 (3) 4 (4) 4 cm ribbing k1, p1 in rnds.

Change to 3 mm double pointed ndls, k 1 rnd **while** inc (4) 2 (6) 4 (8) 8 sts evenly spaced = (48) 48 (54) 54 (60) 60 sts.

Insert marker around first st.

Work **diagram** until sleeve meas 6 cm, count from middle sleeve to establish beg of pattern.

Inc 1 st at each side of marker.

Cont **diagram** and rep inc approx every (2) 1½ (2) 1½ (2) 2 cm until (66) 72 (78) 84 (90) 90 sts.

Cont until sleeve meas (24) 28 (31) 34 (37) 40 cm, or suitable length.

Last rnd is rnd before 1 rnd with putty only, and cast off 5 middle underarm sts (= marked st + 2 sts at each side). Put aside and work other sleeve in the same manner.

Back and front:

With putty and 2.5 mm circular ndl cast on (180) 192 (204) 216 (228) 240 sts. Join and work (3) 3 (3) 4 (4) 4 cm ribbing k1, p1 in rnds.

Change to 3 mm circular ndl.

Insert marker around 1 st at each side with (89) 95 (101) 107 (113) 119 sts between markers.

Work **diagram** until garment meas approx (21) 23 (26) 28 (29) 31 cm, meas on sleeve to establish beginning of diagram for ending with the same rnd as sleeve.**NOTE:** Adjust length to beg with a full pattern.

Cast off 5 sts at each side for armholes (= marked st + 2 sts at each side).

Raglan:

Transfer sleeve sts to the circular 3 mm garment ndl, placing one sleeve above each armhole cast-off = (292) 316 (340) 364 (388) 400 sts.

Insert marker at each junction.

Beg at a marker on the back.

Cont **diagram** and dec for raglan as follows: k2tog after each junction, sl 1, transfer st k tbl back to left ndl, and k2tog tbl before each marker = 8 sts dec.

Rep dec on alt rnds (16) 17 (18) 19 (20) 20 times = (164) 180 (196) 212 (228) 240 sts.

NOTE: Ensure pattern to match further on.

Transfer the (13) 13 (15) 15 (17) 17 middle front sts for neck to spare ndl.

Cont to end of rnd, cut yarn and beg again at neck.

Cont **diagram** back and forth and cast off at each side at beg of every row 2 sts (4)4(3)3(2)3 times, 1 st (4)5(7)8(10)10 times, **at the same time** cont raglan dec where possible (8) 9 (10) 11 (12) 13 times more, and a total of (24) 26 (28) 30 (32) 33 times over sts for the back.**NOTE:** Dec for raglan on RS-rows.

Leave rem sts on ndl for neckband.

Finishing:

Sew underarm openings.

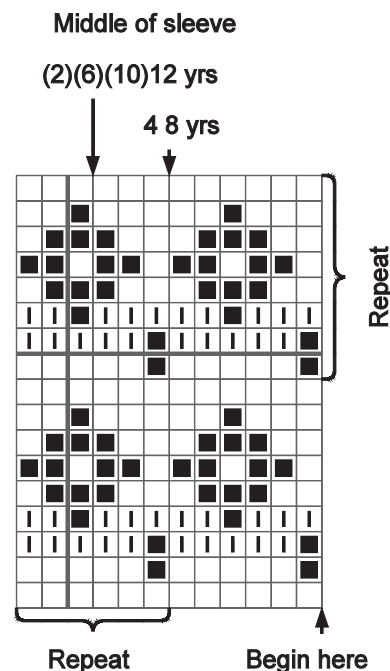
Neckband:

With putty and 2.5 mm circular ndl knit sts from spare ndl and knit up sts at neck edge.

Work 6 cm ribbing k1, p1 in rnds, **while** adjusting number of sts to (104) 108 (112) 116 (120) 124 on first rnd.

Cast off rib-wise.

Fold neckband to WS and sew loosely with hidden sts.



- Putty
 ■ Dk.grey-blue
 ▤ Dusty pastel green