



No 8

BUTTERFLY  
CARDIGAN

Cardigan worked from neck down with  
inc for raglan

Instruction: Olaug Beate Bjelland

**Sizes:**

(3-6) 9-12 mos (2) 4 yrs

**Measurements:**

Chest width: (53) 56 (62) 68 cm

Length: approx (27) 32 (36) 39 cm

Sleeve length: approx (15) 19 (23) 26 cm

All measurements are for the finished garment = personal body measurements + movement allowance. The measurements are all according to given tension.

**Yarn:**

MERINOULL (100 % merino wool,  
50 g = 105 m)

**Alternative yarn:**

PEER GYNT, SMART, ALPAKKA,  
DUO

Note: If alternative yarn is chosen be sure to check the yardage on label. The image of garment might change by using alternative yarn

**Yarn required:**

Sand shell #2125: (3) 4 (4) 5 balls

**Notions:**

(5) 5 (6) 6 buttons

**Suggested knitting needles:**

Circular and double pointed 3 mm and 4 mm

Needle sizes are only suggestions. If your knitting shows tighter tension, use thicker needles, for looser tension use thinner needle

**Tension:**

20 sts and 32 rows pattern with 4 mm ndls = 10 x 10 cm

**Inc for raglan in a mirror image of each other**

Inc right before marked st as follows:

Pick up yarn before marked st, transfer st k tbl to left ndl and k new st.

Inc left after marked st as follows:

Pick up yarn after marked st, transfer new st k-wise to left ndl and k tbl new st.

**INFO:** Beg cardigan at neck, inc for raglan and cast on sts for fronts to shape a lower front neck line.

**Edge sts; k every row****Yoke:**

With 4 mm circular ndl cast on (33) 39 (39) 45 sts, and p first row (= WS).

Insert marker around 4 sts in the row for raglan inc and work as follows:

Work k1, inc right, k next st and insert marker around this st, inc left, k5 (= sleeve), inc right, k next st and insert marker around this st, inc left, k(17) 23 (23) 29 sts (= back), inc right, k next st and insert marker around this st, inc left, k5 (= sleeve), inc right, k next st and insert marker around this st, inc left, end with k1 and cast on 1 new st for front.

Next row: k first st, work p over all sts and cast on 1 new st at end of row for front at the other side = (43) 49 (49) 55 sts.

Cont raglan inc on alt rows at each side of marked sts twice more, and cast on for fronts 3,3 new sts at end of every row to (71) 77 (77) 83 sts.

Work **diagram** and cast on (3) 3 (3) 6 new sts at each side for fronts = (85) 91 (91) 103 sts.

Next row: cast on 1 new st at each side for edge st. Cont **diagram** inside 1 edge st at each side and inc for raglan (9) 9 (12) 12 times more = (159) 165 (189) 201 sts.

Cont **diagram** and divide work in this manner:

Work (25) 25 (28) 31 sts (= left front), transfer (33) 33 (39) 39 sts to spare ndl for sleeve, included marked st at each side, cast on 5 new underarm sts, work (43) 49 (55) 61 sts (= back), transfer (33) 33 (39) 39 sts to spare ndl for sleeve, included marked st at each side, cast on 5 new underarm sts, work (25) 25 (28) 31 sts (= right front).

**Back and front:**

= (103) 109 (121) 133 sts.

Cont **diagram** and ensure pattern to match further.

Cont until work meas (25) 30 (34) 37 cm from shoulder/highest point and straight down with garment placed flat, or approx 2 cm before suitable length, end with one or more rows St-st after last pattern border.

Change to 3 mm circular ndl, and work approx 2 cm ribbing as follows:

1 edge st, k1, \*p1, k1\*, rep from \*-, end with 1 edge st.

From RS cast off loosely rib-wise.

**Sleeves:**

Transfer sts from spare ndl to 4 mm double pointed ndls and knit up 5 sts over the new underarm sts = (38) 38 (44) 44 sts.

Beg of rnd = at middle underarm.

**TIPS:** Pick up yarn between sleeve sts and at each side of the new underarm sts, and on first rnd k this new st tog with next st to avoid holes in garment.

Insert marker around 1 middle underarm st.

Work approx 2 cm **diagram**, adjust pattern and work St-st at middle underarm when not enough sts for a full pattern repeat.

Dec 1 st at each side of marker as follows: k2tog tbl after marker, and k2tog before marker.

Rep dec every (3) 5 (4) 5 cm until (30) 32 (34) 36 sts rem.

Cont until sleeve meas approx (13) 17 (20) 23 cm, or (2) 2 (3) 3 cm before suitable length, end with one or more rnds St-st after last pattern border.

Change to 3 mm double pointed ndls and work (2) 2 (3) 3 cm ribbing k1, p1 in rnds.

Cast off loosely rib-wise

Work other sleeve in the same manner.

**Finishing:****Neckband:**

With 3 mm circular ndl knit up 1 st in each st at neck edge.

Next row WS: p 1 row, **at the same time** adjust number of sts to (57) 61 (65) 67.

Work 6 rows ribbing in this manner: (First row = WS) 1 edge st, k1, \*p1, k1\*, rep from \*-, end with 1 edge st.

From RS cast off loosely rib-wise.

**Left front band girl/right front band boy:**

From RS knit up with 3 mm circular ndl, 1 st every st/row, but miss every 4th st/row at front edge to approx (53) 63 (71) 79 sts.

Number of sts a multiple of 2+1.

Work 5 rows ribbing as follows: (First row = WS) 1 edge st, p1, \*k1, p1\*, rep from \*-, end with 1 edge st.

Cast off loosely rib-wise.

**Right front band girl/left front band boy:**

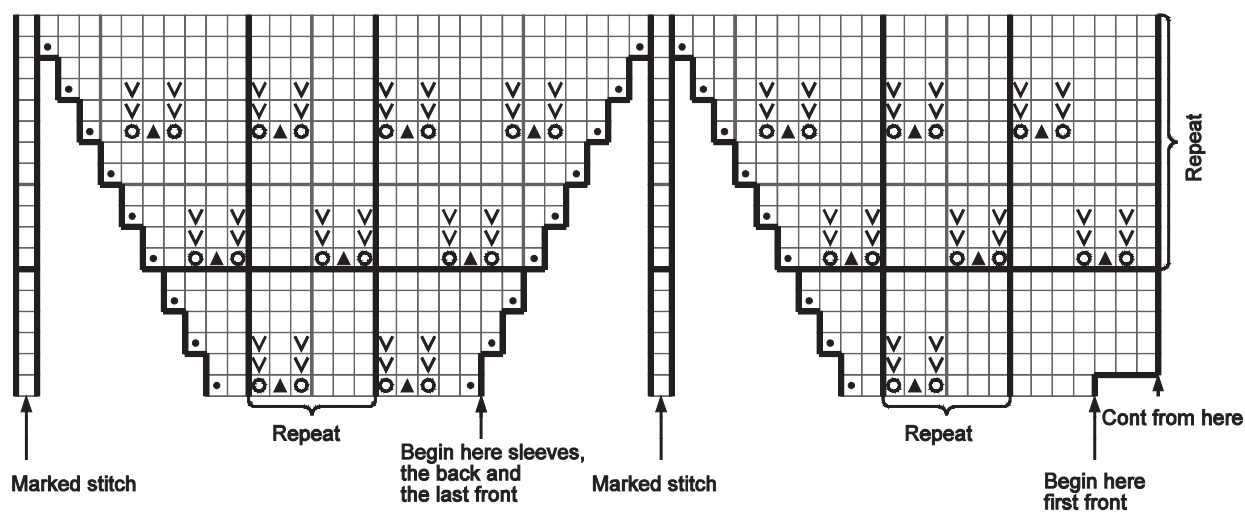
Work in the same manner but with (5)  
5 (6) 6 buttonholes evenly spaced on  
2nd row. The lower 1½ cm from cast  
on row, the upper at middle of  
neckband.

Buttonhole: k2tog, 1 yo.

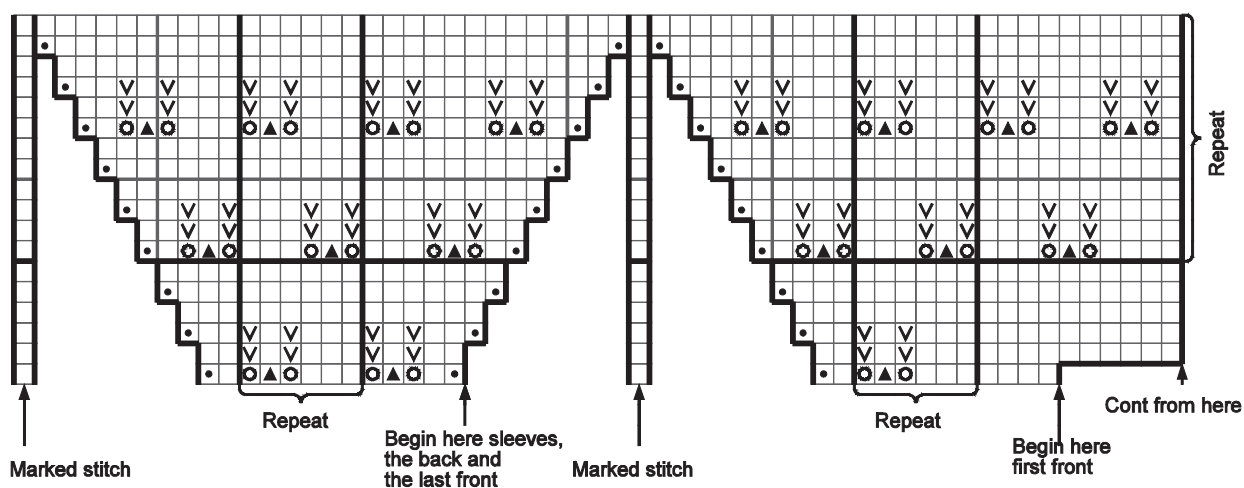
Sew buttons on.

- k on RS, p on WS
- ▽ p on RS, k on WS
- 1 yo
- ▲ sl 2 sts k-wise (as working k2tog),  
k1, pssso
- ◻ Work raglan inc as explained  
in instruction

Size (3-6) 9-12 mos (2) yrs



Size 4 yrs





No 8

# BUTTERFLY BONNET

*Bonnet w/butterfly pattern*

*Instruction: Olaug Beate Bjelland*

## Sizes:

(3-6) 9-12 mos (2) yrs

## Yarn:

MERINOULL (100 % merino wool,  
50 g = 105 m)

## Alternative yarn:

PEER GYNT, SMART, ALPAKKA,  
DUO

Note: If alternative yarn is chosen be sure to  
check the yardage on label. The image of  
garment might change by using alternative yarn

## Yarn required:

Sand shell #2125: (1) 1 (2) balls

## Suggested knitting needles:

Circular and double pointed 4 mm

Circular 3 mm

Needle sizes are only suggestions. If your  
knitting shows tighter tension, use thicker  
needles, for looser tension use thinner needle

## Tension:

20 sts diagram with 4 mm ndls = 10  
cm

## Edge st: k every row

Beg at face.

With 3 mm circular ndl cast on (65) 69  
(73) sts, and work 5 rows ribbing back  
and forth as follows: (First row = WS)  
1 edge st, p1, \*k1, p1\*, rep from \*-\*  
end with 1 edge st.

Change to 4 mm circular ndl

Work **diagram** inside 1 edge st at  
each side, **while** inc (0) 2 (4) sts  
evenly spaced on first row = (65) 71  
(77) sts.

Cont until work meas approx (11) 13  
(14) cm from cast on and end with  
row 6 or row 12 in diagram.

Change to 4 mm double pointed ndls,  
join work and k tog first and last st on  
rnd = (64) 70 (76) sts.

Work 1 rnd St-st.

Dec on next rnd as follows \*k2,  
k2tog\*, rep from \*-\* end with k(0) 2 (0)  
= (48) 53 (57) sts.

Work 3 rnds St-st with no dec.

Next rnd: \*k1, k2tog\*, rep from \*-\* end  
with k(0) 2 (0) = (32) 36 (38) sts.

Work 3 rnds St-st with no dec.

Next rnd: k2tog in the rnd = (16) 18  
(19) sts.

Work 1 rnd St-st with no dec.

Next rnd: k2tog in the rnd, end with  
k(0) 0 (1) = (8) 9 (10) sts.

Cut yarn, pass through sts, gather  
and fasten well.

## Finishing:

### Neckband:

With 3 mm circular ndl knit up approx  
(57) 61 (65) sts at neck edge. Work 4  
cm ribbing in the same manner as  
beg of work

Cast off rib-wise.

Fold neckband to WS and sew loosely  
with hidden sts.

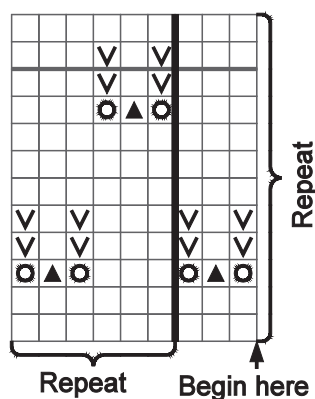
### Cord:

With 3 mm double pointed ndl cast on  
4 sts and work in this manner: k 1  
row, slide sts back to other end of ndl,  
hold yarn firmly and k sts. Rep this  
and always k sts from same side  
without turning.

Cont until cord meas approx (72) 74  
(76) cm.

Cast off.

Pass cord through neckband.



- ☐ k on RS, p on WS
- ☒ p on RS, k on WS
- ☒ 1 yo
- ☒ sl 2 sts k-wise (as working k2tog),  
k1, psso



