

RAGLAN SWEATER

SADNES GARN

THE NORWEGIAN
YARN FACTORY
SINCE 1888



RAGLAN SWEATER

SWEATER WITH 3/4 LONG SLEEVES / INSTRUCTION: OLAUG BEATE BJELLAND



SIZES

(XS-S) M (L) XL (XXL) XXXL

MEASUREMENTS

Bust: (95) 104 (112) 120 (128) 136 cm
Length: approx (53) 53 (53) 55 (56) 58 cm
Sleeve length: 25 cm, or suitable length
All measurements are for the finished garment = personal body measurements + movement allowance. The measurements are all according to given tension.

YARN

TYNN LINE (53 % cotton, 33 % viscose, 14 % linen, 50 g = 220 m)

YARN REQUIRED

Pastel blue #5930: (4) 4 (4) 5 (5) 6 balls

SUGGESTED KNITTING NEEDLES

Circular and double pointed 2.5 mm and 3 mm
Needle sizes are only suggestions. If your knitting shows tighter tension, use thicker needles, for looser tension use thinner needle

TENSION

22 sts and 32 rnds diagram with 3 mm ndls = 10x10 cm

BACK AND FRONT

With 2.5 mm circular ndl cast on (210) 228 (246) 264 (282) 300 sts. Join and work 12 cm

ribbing k1, p1 in rnds. Insert marker around 1 st at each side = (104) 113 (122) 131 (140) 149 sts between markers.

Change to 3 mm circular ndl. Work diagram in rnds, beg at arrow marked in diagram and cont until garment meas approx 34 cm, ending with 1st or 3rd rnd in diagram.

NOTE: First st in diagram = first marked st on rnd.

Next rnd: Cast off (11) 11 (11) 17 (17) 17 sts at each side for armholes (= marked st + (5) 5 (5) 8 (8) 8 sts at each side).

Put garment aside and work sleeves.

SLEEVES

With 2.5 mm double pointed ndls cast on (68) 72 (76) 80 (84) 88 sts. Join and work 6 cm ribbing k1, p1 in rnds

Change to 3 mm double pointed ndls.

K 1 rnd, while inc (1) 3 (2) 4 (6) 8 sts evenly spaced = (69) 75 (78) 84 (90) 96 sts.

Insert marker around first st on rnd.

Work diagram until sleeve meas 25 cm, or suitable length, end with the same rnd as back/front.

Next rnd: Cast off (11) 11 (11) 17 (17) 17 middle underarm sts.

Put aside and work other sleeve the same.

RAGLAN

Work sleeve sts to the circular 3 mm garment ndl, placing one sleeve above each armhole

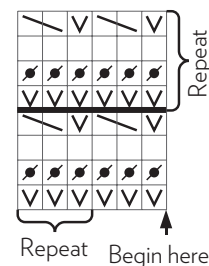
cast-off, at the same time p2tog at each junction (= marker for each raglan), and p these 4 sts every rnd further = (300) 330 (354) 360 (390) 420 sts.
Work (9) 5 (3) 9 (7) 5 rnds diagram.
Cont diagram and dec for raglan at each junction as follows: k2tog tbl before marked st, and k2tog after each marked st = 8 sts dec.
Rep dec on alt rnds (19) 21 (23) 23 (26) 29 times more = (140) 154 (162) 168 (174) 180 sts.
K 1 rnd, while dec (0) 10 (14) 16 (18) 20 sts evenly spaced = (140) 144 (148) 152 (156) 160 sts.

Change to 2.5 mm circular ndl and work 3 cm ribbing k1, p1 in rnds.

Cast off rib-wise.

FINISHING

Sew underarm openings.



- ☒ p
- ☒ Work: k1, 1 yo
- ☐ Work k and drop all yo at the same time
- ☒ Work second st k tbl in back of first st, k first st and slide both sts of ndl