





No 4

## SWEATER

Sweater w/bow pattern on sleeves

Instruction: Olaug Beate Bjelland

## Sizes:

(XS) S (M) L (XL) XXL (XXXL)

## Measurements:

Bust: (92) 97 (103) 111 (116) 121 (127) cm

Length: (64) 65 (66) 68 (69) 70 (71) cm

Sleeve length: 47 cm, or suitable length

All measurements are for the finished garment = personal body measurements + movement allowance. The measurements are all according to given tension.

## Yarn:

ALPAKKA ULL (65 % alpaca, 35 % wool, 50 g = 100 m)

TYNN SILK MOHAIR (57 % mohair, 28 % silk, 15 % wool, 25 g = 212 m)

## Yarn required:

ALPAKKA ULL

Rust #3355: (7) 8 (9) 9 (10) 11 (12) balls

TYNN SILK MOHAIR

Terracotta #3835: (4) 4 (4) 5 (5) 5 (6) balls

## Suggested knitting needles:

Circular and double pointed ndls 5 mm and 6 mm

Needle sizes are only suggestions. If your knitting shows tighter tension, use thicker needles, for looser tension use thinner needle...

## Tension:

15 sts St-st and pattern with double yarn and 6 mm ndls = 10 cm

**Work sweater with double yarn (1 strand ALPAKKA ULL + 1 strand TYNN SILK MOHAIR)****Edge st: k every row**

## Back and front:

With double yarn and 5 mm circular ndl cast on (138) 146 (154) 166 (174) 182 (190) sts.

Join and work 4 rnds ribbing k1 tbl, p1 in rnds.

Change to 6 mm circ ndl.

Insert marker on 1 st at sides with (68) 72 (76) 82 (86) 90 (94) sts between markers

Cont in St-st until work meas 47 cm, [same for all sizes].

Cast off (7) 7 (7) 9 (9) 9 (9) sts at each side for armholes (= marked st + (3) 3 (3) 4 (4) 4 (4) sts at each side of markers).

Work each side separately.

## Back:

= (62) 66 (70) 74 (78) 82 (86) sts.

Cont St-st back and forth, **at the same time** cast off for armholes at beg of every row at each side 2 sts (1)1(1)2(3)3(4) times, 1 st (2)3(4)3(2)3(2) times = (4) 5 (6) 7 (8) 9 (10) sts cast off at each side, and (54) 56 (58) 60 (62) 64 (66) sts rem.

Cont St-st inside 1 edge st at each side until work meas (62) 63 (64) 66 (67) 68 (69) cm.

Transfer the (22) 22 (24) 24 (24) 26 (26) center sts for neck to a spare ndl, and work each side separately.

Cast off at neck on alt rows 2 sts once, 1 st once.

Cont until work meas (64) 65 (66) 68 (69) 70 (71) cm.

Transfer rem (13) 14 (14) 15 (16) 16 (17) shoulder sts to a spare ndl.

Work other side the same but in a mirror image.

## Front:

= (62) 66 (70) 74 (78) 82 (86) sts.

Work and cast off for armholes as at back until work meas (57) 58 (59) 61 (62) 63 (64) cm.

Transfer the (12) 12 (14) 14 (14) 16 (16) center front sts to a spare ndl for neck, and work each side separately.

Cast off at neck on alt rows 3 sts once, 2 sts once, 1 st 3 times.

Cont until work meas (64) 65 (66) 68 (69) 70 (71) cm.

Transfer rem (13) 14 (14) 15 (16) 16 (17) shoulder sts to a spare ndl.

Work other side the same but in a mirror image.

## Sleeves:

With double yarn and 5 mm double pointed ndls cast on (28) 30 (30) 32 (32) 34 (34) sts. Join and work 4 rnds ribbing k1 tbl, p1 in rnds.

Change to 6 mm double pointed ndls.

K 1 rnd while **inc** evenly spaced to 38 sts, [same for all sizes].

Insert marker on first st on rnd and p this st every rnd. This st is not included in pattern.

Work **diagram** until sleeve meas (16) 12 (10) 7 (6) 4 (3) cm.

Inc 1 st at each side of marker [= lift yarn between 2 sts and k tbl this new st].

Rep inc every (16) 12 (10) 7 (6) 5 (4) cm until (42) 44 (46) 50 (52) 56 (58) sts on rnd. Work new sts in St-st as they arise.

Cont until work meas 47 cm, or suitable length

Cast off (7) 7 (7) 9 (9) 9 (9) center underarm sts

Put aside and work other sleeve the same.

Transfer sts from both sleeves to same 6 mm circ ndl and work sleeve cap for both sleeves at the same time. The two sleeve caps will then become identical.

## Sleeve cap:

= (35) 37 (39) 41 (43) 47 (49) sts.

Work **diagram** back and forth and dec sleeve cap at beg of every row at each side 2 sts (1)1(1)2(2)3(3) times = (2) 2 (2) 4 (4) 6 (6) sts dec at each side.**NOTE:** When not enough sts for 1 yo and k2tog, work these sts in St-st.

Cast off 1 st (5) 5 (6) 6 (6) 7 (7) times at each side = (21) 23 (23) 21 (23) 21 (23) sts rem.

Cont until sleeve cap meas approx (9) 10 (11) 12 (13) 14 (15) cm, meas at center, from dividing point for armholes.

Cast off further 2 sts twice, 3 sts once at each side.

Cast off rem (7) 9 (9) 7 (9) 7 (9) sts.

## Finishing:

Graft or knit shoulder sts tog.

Sew sleeves on.

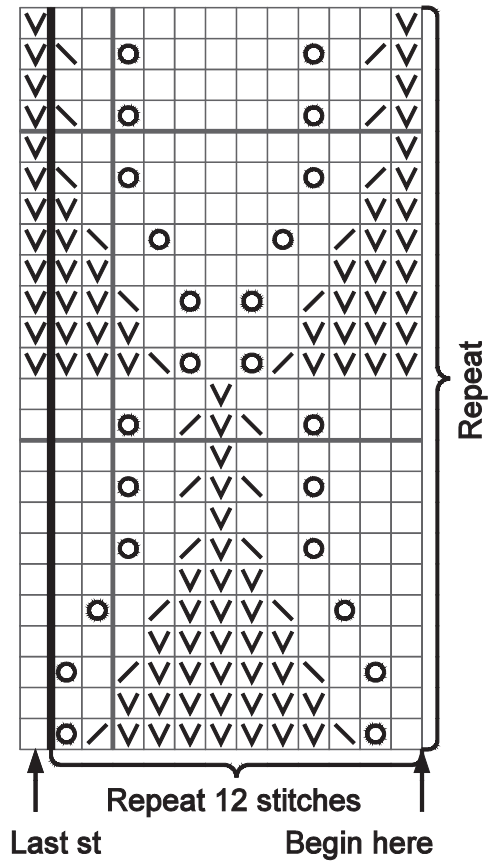
## Neckband:

Transfer sts from spare ndls to 5 mm circ ndl and with double yarn knit up additional sts at neck until approx (70) 72 (74) 76 (78) 80 (82) sts on rnd.

Number of sts a multiple of 2.

Work 4 cm ribbing k1 tbl, p1 in rnds.

Cast off loosely rib-wise.



- ☐ K on RS, p on WS
- ☒ V P on Rs, k on WS
- ☒ 1 yo
- ☒ k2tog
- ☒ Sl 1, k1, pssso

