





No 7a

JOHAN  
RAGLAN SWEATER

Sweater w/raglan and turtle neck

Instruction: Sandnes Garn

**Sizes:**

(2) 4 (6) 8 (10) 12 yrs

**Measurements:**

Chest width: (64) 67 (71) 75 (78) 85 cm

Length: (36) 40 (44) 48 (52) 54 cm

Sleeve length, underarm: (23) 26 (29) 32 (35) 40 cm, or suitable length

All measurements are for the finished garment = personal body measurements + movement allowance. The measurements are all according to given tension

**Yarn:**

SMART (100 % wool, superwash, 50 g = 100 m)

**Alternative yarn:**

PEER GYNT, ALPAKKA, DUO, MANDARIN MEDI, MERINOULL, SPØT

Note: If alternative yarn is chosen be sure to check the yardage on label. The image of garment might change by using alternate yarn.

**Yarn required:**

Green #8215: (2) 2 (3) 3 (3) 4 balls

Lt.sea-green #7721: (2) 2 (2) 2 (3) 3 balls

Lt.grey melange #1032: (3) 3 (4) 4 (5) 6 balls

**Suggested knitting needles:**Circular and double pointed ndls  
3 mm and 3.5 mm

Needle sizes are only suggestions. If your knitting shows tighter tension, use thicker needles, for looser tension use thinner needle

**Tension:**

22 sts St-st with 3.5 mm ndls = 10 cm

**Sleeves:**

With green and 3 mm double pointed ndls cast on (36) 38 (38) 40 (42) 44 sts. Join and work ribbing k1, p1 in rnds as follows: (4) 4 (4) 5 (5) 5 rnds green, 2 rnds lt.grey melange, 2 rnds lt.sea-green, (4) 4 (4) 5 (5) 5 rnds green.

Change to 3.5 mm double pointed ndls.

Work 1 rnd St-st and inc 1 st at center underarm.

Insert marker on first and last st on rnd.

Work **diagram** until sleeve meas 6 cm, count from center of sleeve to establish beg of pattern.

Inc 1 st at each side of marker.

Rep inc every (3) 3 (2,5) 2,5 (2,5) 2,5 cm until (49) 53 (57) 61 (65) 69 sts on rnd. Work new sts in pattern as they appear.

Cont until work meas (23) 26 (29) 32 (35) 40 cm, or suitable length.

Cast off 8 sts at center underarm (= marked sts + 3 sts at each side).

Put aside and work other sleeve the same.

**Back and front:**

With green and 3 mm circ ndl cast on (154) 162 (172) 180 (190) 206 sts. Join and work ribbing k1, p1 in rnds as for sleeves.

Change to 3.5 mm circ ndl.

Work 1 rnd St-st and dec (14) 14 (16) 16 (18) 18 sts evenly spaced = (140) 148 (156) 164 (172) 188 sts.

Insert marker at each side with (71) 75 (79) 83 (87) 95 sts for the front and (69) 73 (77) 81 (85) 93 sts for the back.

Cont in **diagram** until work meas approx (23) 25 (28) 31 (34) 34 cm. Meas on sleeve where to start diagram for matching last rnd on back and front to last rnd on sleeves.

Cast off 8 sts at each side for armholes (= 4 sts at each side of markers).

**Raglan:**

Transfer sleeve sts to the circular 3.5 mm garment ndl, placing one sleeve above each armhole cast-off = (206) 222 (238) 254 (270) 294 sts.

Insert marker at each junction.

Rnd beg at a junction on the back.

Work **diagram** and dec raglan at each marker as follows: k2tog before each marker and sl1, k1, pssso after each marker = 8 sts dec on rnd.

Adjust diagram to match pattern in height as before.

Rep dec on alt rnds until (14) 15 (17) 18 (19) 21 times = (94) 102 (102) 110 (118) 126 sts.

Transfer the (13) 15 (15) 17 (17) 19 center front sts to a spare ndl for neck.

Cut yarn, start again at neck and cont diagram as before working back and forth.

Cast off at neck 2 sts at beg of every row further on, and **at the same time**cont raglan dec on **RS rows** when possible (3) 3 (3) 3 (4) 4 times more and until (17) 18 (20) 21 (23) 25 times of dec on sts for the back are finished. Leave rem sts on ndl for neck.**Finishing:**

Sew tog underarm openings.

**Turtle neck:**

Transfer neck sts to small 3 mm circ ndl and with green pick up and knit sts at neck edge.

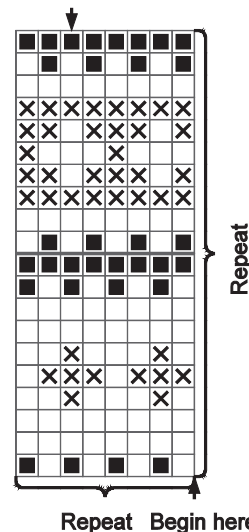
Work 1 rnd St-st and at the same time adjust number of sts to approx (90) 94 (96) 98 (100) 104.

Work (7) 7 (8) 8 (9) 9 cm ribbing k1, p1 in rnds, then 2 rnds lt.sea-green, 2 rnds lt.grey melange, 4 rnds green.

Cast off loosely rib-wise.

Fold turtle neck to RS.

Center of sleeve



- ☐ Lt.grey melange
- ☒ Green
- ☒ Lt.sea-green