



NO 6 FANTASY SWEATER

#fantasigenser

Knitting skill level: *** Medium

Instruction: Anita Brathetland

Size:

(2-4) 6 (8) 10 (12) yrs

Measurements:

Chest width: (66) 72 (78) 84 (90) cm

Length: approx (38-40) 44 (48) 50 (52) cm

Sleeve length: (24-28) 31 (34) 37 (40) cm, or suitable length

All measurements are for the finished garment = personal body measurements + movement allowance. The measurements are all according to given tension.

Description:

Work sweater from hem up.

Work back and front in rnds with diagram.

Cast off sts at each side for armholes.

Work sleeves separately, and join sleeves to back/front. Cont over all sts and dec for raglan. Cast off sts for neck at front. Work neckband and fold band double to WS.

Yarn:

SMART (100 % wool, superwash, 50 g = 100 m)

Alternative yarn:

PEER GYNT, ALPAKKA, DUO, MERINOULL
NOTE: If alternative yarn is chosen be sure to check the yardage on label. The image of garment might change by using alternative yarn.

Yarn required:

Sand shell #2125: (4) 5 (6) 7 (8) balls

Eucalyptus #8051: 1 ball all sizes

Burnt terracotta #4036: 1 ball all sizes

Ochre #2527: 1 ball all sizes

Amber yellow #2324: 1 ball all sizes

Suggested knitting needles:

Circular and double pointed 3.5 mm and 4 mm

Needle sizes are only suggestions. If your knitting shows tighter tension, use thicker needles, for looser tension use thinner needle

Tension:

20 sts St-st with 4 mm ndls = 10 cm

Back and front:

With sand shell and 3.5 mm circular ndl cast on (132) 144 (156) 168 (180) sts, Join and work (3) 3 (4) 4 (4) cm ribbing k1, p1 in rnds.

Change to 4 mm circular ndl.

Insert marker around 1 st on each side with (65) 71 (77) 83 (89) sts between markers.

Work **diagram** for chosen size.

Cont St-st in sand shell until garment meas approx (23-25) 28 (30) 31 (31) cm.

Cast off 9 sts at each side for armholes (= marked st + 4 sts at each side).

Put garment aside and work sleeves.

Sleeves:

With sand shell and 3.5 mm double pointed ndls cast on (34) 36 (38) 40 (42) sts. Join and work (3) 3 (4) 4 (4) cm ribbing k1, p1 in rnds.

Change to 4 mm double pointed ndls.

Insert marker around first st on rnd.

Read following chapter before continue knitting:

Size (2-4) 6 yrs:

Work St-st until sleeve meas (4-6) 6 cm. Inc 1 st on each side of marker.

Cont **diagram** for chosen size, arrow in diagram shows middle of sleeve, count from middle underarm to establish beg of diagram.

Rep inc approx every (2-2½) 2½ cm until (52) 56 sts.

Size (8) 10 (12) yrs:

Work St-st until sleeve meas 6 cm.

Inc 1 st on each side of marker. Cont St-st and rep inc approx every 2½ cm until (60) 64 (68) sts.

NOTE: When sleeve meas (8) 10 (13) cm work **diagram** for chosen size, arrow in diagram shows middle of sleeve, count from middle underarm to establish beg of diagram.

All sizes:

When diagram is finished cont St-st with sand shell until sleeve meas (24-28) 31 (34) 37 (40) cm, or suitable length.

Cast off 9 middle underarm sts (= marked st + 4 sts at each side).

Put aside and work other sleeve in the same manner.

Raglan:

Transfer sts for sleeves to the circular 4 mm garment ndl, placing one sleeve above each armhole cast-off.

Work 1 rnd St-st with sand shell, **at the same time** work k2tog at each junction, Insert marker around this st = (196) 216 (236) 256 (276) sts and 4 markers.

Beg at a junction on the back.

Dec for raglan at each marker as follows:

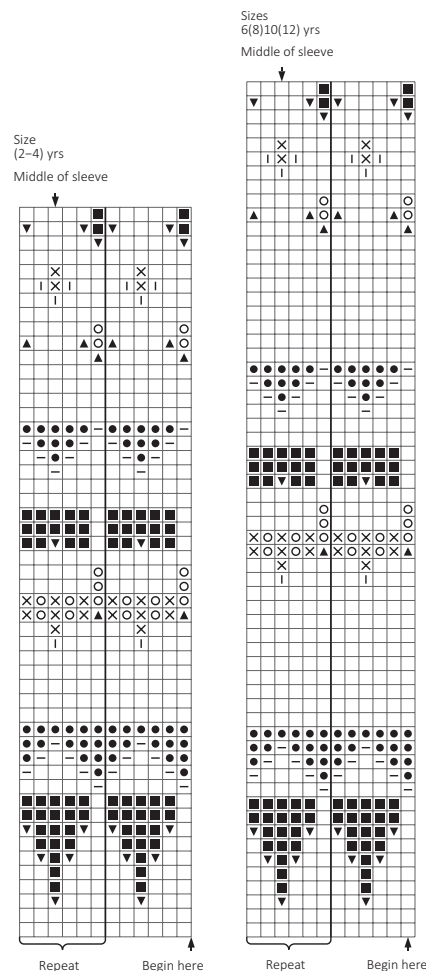
Work marked st, sl 1 k-wise, k1, psso, work until 2 sts before marked st, k2tog, rep from *-* in the rnd = 8 sts dec.

Rep dec on alt rnds (9) 10 (12) 13 (15)

times = (124) 136 (140) 152 (156) sts.

Transfer the (9) 9 (11) 11 (13) middle front sts to spare ndl for neck.

Work to end of rnd, cut yarn and beg again at neck.



Cont St-st back and forth and cast off at beg of every row at each side 2 sts twice all sizes, 1 st (4)5(5)6(6) times, **at the same time** cont raglan dec further (6) 7 (7) 8 (8) times more and until a total of (15) 17 (19) 21 (23) times.

NOTE: Dec for raglan on RS rows.

Leave rem sts on ndl for neckband.

Finishing:

Sew underarm openings.

Neckband:

Transfer neck sts to 3.5 mm circular ndl and with sand shell knit up sts at neck edge.

Work 6 cm ribbing k1, p1 in rnds, **at the same time** adjust number of sts to (80) 84 (88) 92 (96) on first rnd.

Cast off rib-wise.

Fold neckband to WS and sew loosely with hidden sts.

