





# NO 5 VARDE RAGLAN SWEATER

Raglan sweater w/pattern  
Instruction: Anita Brathetland

## Sizes:

(2) 4 (6) 8 (10) 12 yrs

## Measurements:

Chest width: (62) 67 (71) 76 (80) 84 cm  
Length: approx (36) 40 (44) 48 (50) 52 cm  
Sleeve length: (24) 28 (31) 34 (37) 40 cm,  
or suitable length.

All measurements are for the finished garment  
= personal body measurements + movement  
allowance. The measurements are all according to  
given tension.

## Yarn:

SISU (80 % wool, 20 % nylon, 50 g =  
175 m)

## Alternative yarn:

MINI ALPAKKA, MANDARIN PETIT,  
ALPAKKA SILKE, TYNN MERINOULL,  
BABYULL LANETT

NOTE: If alternative yarn is chosen be sure to check  
the yardage on label. The image of garment might  
change by using alternative yarn.

## Yarn required:

Golden brown #2564/ Dusty Lt.green  
#9041: (3) 3 (4) 4 (5) 6 balls  
Lt.limestone #2319/ Lt.limestone #2319:  
(2) 2 (2) 3 (3) 4 balls

## Suggested knitting needles:

Circular and double pointed 2.5 mm and  
3 mm

Needle sizes are only suggestions. If your knitting  
shows tighter tension, use thicker needles, for looser  
tension use thinner needle.

## Tension:

27 sts St-st with 3 mm ndls = 10 cm

## Sleeves:

With golden brown/dusty Lt.green and 2.5  
mm circular ndl cast on (40) 44 (44) 48  
(48) 52 sts. Join and work (3) 3 (3) 4 (4) 4  
cm ribbing k2, p2 in rnds.

Change to 3 mm circular ndl, k 1 rnd **while**  
inc (8) 4 (10) 6 (12) 8 sts evenly spaced =  
(48) 48 (54) 54 (60) 60 sts.

Insert marker around first st.

Work **diagram** until sleeve meas 6 cm,  
and count from middle of sleeve to  
establish beg of diagram.

Inc 1 st at each side of marker.

Cont **diagram** and rep inc every (3) 2½  
(2½) 2 (2½) 2½ cm until (60) 66 (72) 78  
(84) 84 sts on rnd.

Cont until sleeve meas (24) 28 (31) 34 (37)  
40 cm, or suitable length.

Cast off 5 middle underarm sts (= marked  
st + 2 sts at each side).

Put aside and work other sleeve in the  
same manner.

## Back and front:

With golden brown/dusty Lt.green and 2.5  
mm circular ndl cast on (168) 180 (192)  
204 (216) 228 sts. Join and work 6 rnds  
St-st for facing, p 1 rnd (= folding rnd). All  
further measurements from this rnd.

Change to 3 mm circular ndl.

Insert marker around 1 st at each side  
with (83) 89 (95) 101 (107) 113 sts  
between each marker.

Work **diagram** until garment meas approx  
(22) 25 (27) 30 (30) 32 cm, and meas on  
sleeve where to start diagram for ending  
with the same pattern border as the  
sleeve.

**NOTE:** Adjust length to beg on a pattern  
rnd with one color only.

Cast off 5 sts at each side for armholes (=  
marked st + 2 sts at each side).

## Raglan dec:

Transfer sleeve sts to the same 3 mm  
circular garment ndl, placing one sleeve  
above each armhole cast-off = (268) 292  
(316) 340 (364) 376 sts.

Insert marker at each junction.

Beg at a junction on the back.

Cont **diagram** and dec for raglan in this  
manner: k2tog after each marker, and sl  
1 k-wise, k1, transfer st k tbl back to left  
ndl and k2tog tbl before each marker = 8  
sts dec.

Rep dec on alt rnds a total of (12) 14 (16)  
17 (20) 22 times more = (172) 180 (188)  
204 (204) 200 sts on rnd.

**NOTE:** Ensure pattern to mach further in  
the work.

Transfer the (15) 15 (17) 19 (19) 21 middle  
front sts to spare ndl for neck.

Cont to end of rnd, cut yarn and beg again  
at neck.

Cont **diagram** back and forth, and cast off  
for neck at beg of every row at each side  
3 sts once for all sizes, 2 sts (2)3(3)2(2)2  
times, 1 st (5)4(4)6(6)6 times, **at the same**

**time** cont raglan dec as before where  
possible (8) 8 (8) 9 (9) 9 times more and  
until a total of (20) 22 (24) 26 (29) 31  
times.

**NOTE:** Work raglan dec on RS rows.  
Leave rem sts on ndl for neckband.

## Finishing:

Sew underarm openings.

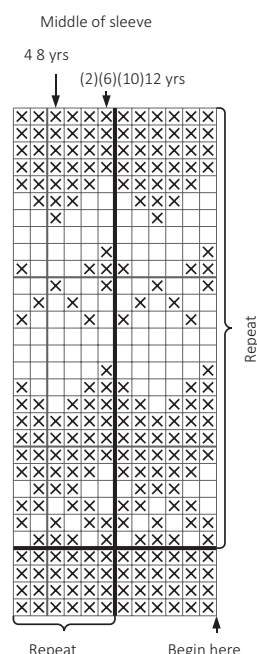
## Neckband:

Transfer sts to small 2.5 mm circular ndl  
and with golden brown/dusty Lt.green knit  
up sts at neck edge.

Work 6 cm ribbing k2, p2 in rnds, **at the  
same time** adjust number of sts to (104)  
108 (112) 116 (120) 124 on first rnd.

Cast off rib-wise.

Fold neckband and sew loosely on WS.



Lt.limestone

Golden brown/Dusty Lt.green



