

CABLES

# SADNES GARN

THE NORWEGIAN  
YARN FACTORY  
SINCE 1888





# HAT W/CABLES

HAT W/CABLES / INSTRUCTIONS: OLAUG BEATE BJELLAND

## SIZES

(2) 4-6 (8-10) 12 yrs

## MEASUREMENTS

Circumference of head: (42) 44-45 (46-47) 48-52 cm

All measurements are for the finished garment = personal body measurements + movement allowance. The measurements are all according to given tension

## YARN

SMART (100 % wool, Superwash, 50 g = 100 m)

## ALTERNATIVE YARN

PEER GYNT, ALPAKKA, DUO, MERINOULL

Note: If alternative yarn is chosen be sure to check the yardage on label. The image of garment might change by using alternative yarn

## YARN REQUIRED

Terracotta #3544/Amber yellow #2324/  
Burnt terracotta #4036: 2 balls all sizes

## SUGGESTED KNITTING NEEDLES

Double pointed 3 mm and 3,5 mm  
Needle sizes are only suggestions. If your knitting shows tighter tension, use thicker needles, for looser tension use thinner needle

## TENSION

22 sts St-st with 3.5 mm ndls = 10 cm  
28 sts diagram = 10 cm

With 3 mm double pointed ndls cast on (72) 80 (88) 96 sts. Join and work (8) 8 (10) 12 cm ribbing k2, p2 in rnds.

Turn work with WS to RS (for a nice fold up of hat).

Change to 3.5 mm double pointed ndls, cont diagram A and inc as shown in diagram = (108) 120 (132) 144 sts.

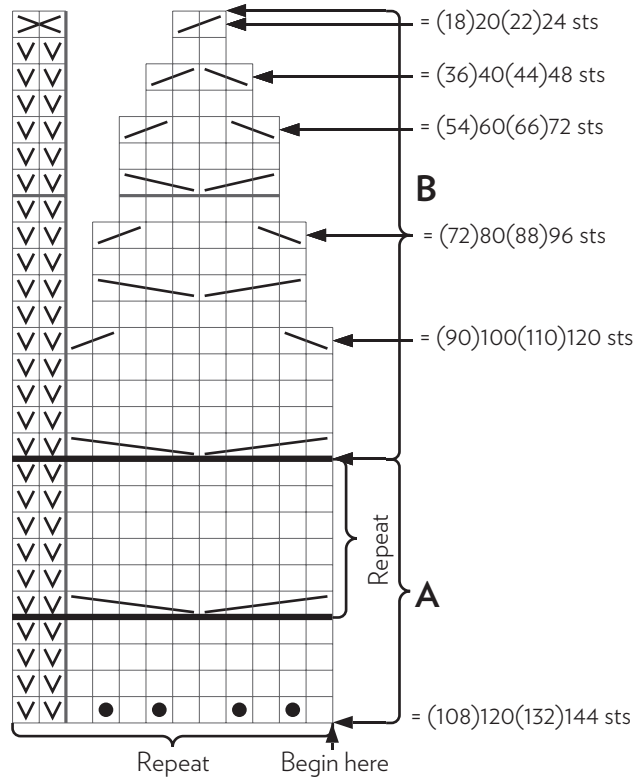
Rep diagram A until work meas approx (16) 18 (20) 22 cm, meas from cast on rnd, and end with a full diagram.

Cont diagram B and dec as shown in diagram = (18) 20 (22) 24 sts.

Next rnd: k on k sts, p on p sts.

Cut yarn, pull through sts, gather and fasten well on WS.

## HAT W/CABLES



□ k

▣ p

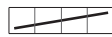
● Inc 1 st: pick up yarn between 2 sts and k tbl this new st



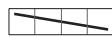
Transfer 2 sts to spare ndl and hold in back of work, k3, k sts from spare ndl



Transfer 3 sts to spare ndl and hold in front of work, k2, k sts from spare ndl



Transfer 2 sts to spare ndl and hold in back of work, k2, k sts from spare ndl



Transfer 2 sts to spare ndl and hold in front of work, k2, k sts from spare ndl



Transfer 1 st to spare ndl and hold in back of work, k2, k st from spare ndl



Transfer 2 sts to spare ndl and hold in front of work, k1, k sts from spare ndl

↘ Sl 1 k-wise, k1, psso

↗ k2tog

✕ p2tog

# MITTENS W/CABLE

MITTENS W/CABLE PATTERN / INSTRUCTION: OLAUG BEATE BJELLAND

## SIZES

(2) 4-6 (8-10) 12 yrs

## YARN

SMART (100 % wool, Superwash,  
50 g = 100 m)

## ALTERNATIVE YARN

PEER GYNT, ALPAKKA, DUO,  
MERINOULL

Note: If alternative yarn is chosen be sure to check the yardage on label. The image of garment might change by using alternative yarn

## YARN REQUIRED

Terracotta #3544/Amber yellow #2324/  
Burnt terracotta #4036: 2 balls all sizes

## SUGGESTED KNITTING NEEDLES

Double pointed 3 mm and 3,5 mm  
Needle sizes are only suggestions. If your knitting shows tighter tension, use thicker needles, for looser tension use thinner needle

## TENSION

22 sts St-st with 3.5 mm ndls = 10 cm  
28 sts diagram = 10 cm

## INC 1 ST

Pick up yarn between 2 sts and k tbl this new st

With 3 mm double pointed ndls cast on (32)  
36 (40) 44 sts. Join and work (5) 6 (7) 8 cm  
ribbing as follows:

(2) yrs:

p1, k2, \*p2, k2\*, rep from \*-\*, end with p1.

4-6 yrs:

\*p2, k2\*, rep from \*-\* in the rnd

(8-10) yrs:

k1, p2, \*k2, p2\*, rep from \*-\*, end with k1.

12 yrs:

\*k2, p2\*, rep \*-\* in the rnd.

## ALL SIZES

Insert marker at each side with (16) 18 (20) 22  
sts for each part.

Change to 3.5 mm double pointed ndls.

## RIGHT MITTEN

Work 4 rnds diagram and St-st as follows:  
k(3) 4 (5) 6, work diagram A, cont St-st to  
end of rnd. The p sts in diagram will match p  
sts in ribbing.

Spread sts on 3 ndls as follows:

1st ndl: (18) 20 (22) 24 sts = top of hand.

2nd ndl: (8) 9 (10) 11 sts.

3rd ndl: (8) 9 (10) 11 sts.

2nd ndl and 3rd ndl = palm of hand.

Cont in this order, at the same time inc for  
thumb gusset on rnd 2 as follows:

Work 2 sts, inc 1, work to end of rnd.

Work 1 rnd without inc.

Work 2 sts on 2nd ndl, inc 1, k1, inc 1 = 3 sts for  
gusset, work to end of rnd.

Rep inc on alt rnds with 2 sts more for gusset  
every rnd of inc until (7) 9 (11) 13 sts for  
gusset.

Transfer sts for gusset to a yarn end and cast  
on 2 new sts at back of thumb = (18) 20 (22)  
24 sts for top of hand and (18) 20 (22) 24 sts  
for palm of hand.

Cont St-st and diagram A until work meas  
approx (8) 10 (11) 13 cm from after ribbing,  
and end with a full diagram.

Work diagram B and at top of hand dec as  
shown in diagram, at the same time dec 1 st  
at beg of 2nd ndl as follows: sl first st k-wise,  
k1, psso, work until 2 sts rem on 3rd ndl, k2tog  
= 4 sts dec.

Dec on every rnd.

When diagram is finished (24) 28 (32) 36 sts  
rem.

Cont k on k sts, p on p sts and dec at top of  
hand as for palm of hand until 8 sts rem.

Cut yarn, pull through sts, gather and fasten  
well.

## THUMB

Transfer sts for thumb to 3.5 mm double  
pointed ndls, knit up 2 sts at side, 1 st in each  
of the 2 new sts at palm side and 1 new st at  
the other side = (12) 14 (16) 18 sts on rnd.

Work approx (3½) 4 (4½) 5 cm St-st in rnds.

K2tog in the rnd = (6) 7 (8) 9 sts.

K2tog in the rnd, end with k(0) 1 (0) 1 = (3) 4  
(4) 5 sts.

Cut yarn, pull through sts, gather and fasten  
well.

## LEFT MITTEN

Work in the same manner as right mitten but  
in a mirror image. Beg with

(2) yrs:

k1, p2, \*k2, p2\*, rep from \*-\*, end with k1.

4-6 yrs:

\*k2, p2\*, rep from \*-\* in the rnd.

(8-10) yrs:

p1, k2, \*p2, k2\*, rep from \*-\*, end with k1.

12 yrs:

\*p2, k2\*, rep \*-\* in the rnd.

Change to 3.5 mm double pointed ndls after  
ribbing and work 4 rnds as follows:

1st ndl: (8) 9 (10) 11 sts.

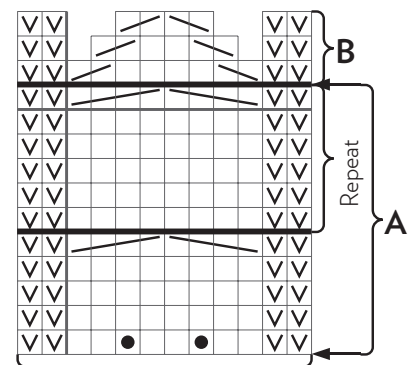
2nd ndl: (8) 9 (10) 11 sts.

1st and 2nd ndl = palm side.

3rd ndl: k(3) 4 (5) 6, work diagram A, k(3) 4  
(5) 6 = top of hand.

The p sts in diagram matches p sts in ribbing.  
Inc for gusset when 2 sts rem on 2nd ndl.

## MITTENS W/CABLES



Middle top of hand  
= 12 sts after inc

□ k

✓ p

● Inc 1 st: pick up yarn between  
2 sts and k tbl this new st

Transfer 2 sts to spare ndl and hold in  
front of work, k2, k sts from spare ndl

Transfer 2 sts to spare ndl and hold in  
back of work, k2, k sts from spare ndl

Sl 1 k-wise, k1, psso

k2tog

# NECKWARMER W/CABLES

WORKED FROM TOP DOWN W/CABLE PATTERN / INSTRUCTION: OLAUG BEATE BJELLAND



## SIZES

(2) 4-6 (8-10) yrs

## YARN

SMART (100 % wool, Superwash,  
50 g = 100 m)

## ALTERNATIVE YARN

PEER GYNT, ALPAKKA, DUO,  
MERINOULL

Note: If alternative yarn is chosen be sure to check the yardage on label. The image of garment might change by using alternative yarn

## YARN REQUIRED

Terracotta #3544/Amber yellow #2324//  
Burnt terracotta #4036: 2 balls all sizes

## SUGGESTED KNITTING NEEDLES

Circular and double pointed 3 mm and 4 mm  
Needle sizes are only suggestions. If your knitting shows tighter tension, use thicker needles, for looser tension use thinner needle

## TENSION

20 sts St-st with 4 mm ndls = 10 cm  
25 sts diagram = 10 cm

## ON THE ROUND YOKE INC ARE WORKED IN A MIRROR IMAGE OF EACH OTHER.

Inc to the right after 2 p sts as follows: Pick up yarn between 2 sts after 2 p sts, transfer st k tbl back to left ndl and k this new st.  
Inc to the right before 2 p sts as follows: Pick up yarn between 2 sts before 2 p sts, transfer st k-wise to left ndl and k tbl this new st.

## INFO

Neckwarmer is worked from top down, and inc for round yoke.  
Fold neckband to RS.

## YOKE

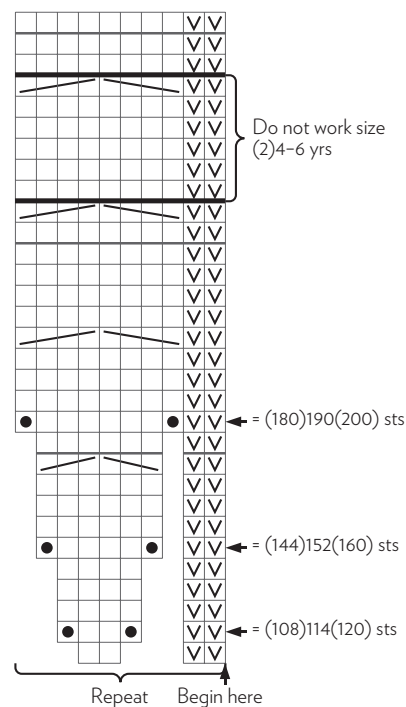
With 4 mm double pointed ndls cast on (72) 76 (80) sts.

Change to 3 mm double pointed ndls and work (10) 12 (14) cm ribbing k2, p2 in rnds.  
Change to 4 mm circular ndl.

Work diagram, and inc as shown in diagram = (180) 190 (200) sts.

P 1 rnd, k 1 rnd, p 1 rnd.  
Cast off loosely k-wise.

## NECKWARMER



□ k

▽ p

● inc 1 st as explained in instruction

Transfer 1 st to spare ndl and hold in front of work, k2, k st from spare ndl

Transfer 2 sts to spare ndl and hold in back of work, k1, k sts from spare ndl

Transfer 2 sts to spare ndl and hold in front of work, k2, k sts from spare ndl

Transfer 2 sts to spare ndl and hold in back of work, k2, k sts from spare ndl