

ALEX

SADNES GARN

THE NORWEGIAN
YARN FACTORY
SINCE 1888



ALEX SWEATER

SWEATER W/PATTERN ON YOKE / INSTRUCTION: ANITA BRATHETLAND



SIZES

(2) 4 (6) 8 (10) 12 yrs

MEASUREMENTS

Chest width: (64) 68 (72) 76 (80) 84 cm
Length: approx (36) 40 (44) 48 (50) 52 cm
Sleeve length: (24) 27 (30) 33 (36) 40 cm, or suitable length

All measurements are for the finished garment = personal body measurements + movement allowance. The measurements are all according to given tension

YARN

SMART (100 % wool, Superwash, 50 g = 100 m)

ALTERNATIVE YARN

PEER GYNT, ALPAKKA, DUO, MERINOULL

Note: If alternative yarn is chosen be sure to check the yardage on label. The image of garment might change by using alternative yarn

YARN REQUIRED

Burnt tawny #2544/Sea-green mélange #7252: (4) 5 (5) 6 (7) 8 balls
Wine #4363/Green #8264: 1 ball all sizes
Old rose #4332/Natural #1012: 1 ball all sizes
Lt.sea-green #7721/Amber #2324: 1 ball all sizes
Burnt terracotta #4036/Terracotta #3544: 1 ball all sizes

SUGGESTED KNITTING NEEDLES

Circular and double pointed 3.5 mm and 4 mm
Needle sizes are only suggestions. If your knitting shows tighter tension, use thicker needles, for looser tension use thinner needle.

TENSION

20 sts x 24 rnds diagram with 4 mm ndls= 10 x 10 cm

BACK AND FRONT

With burnt tawny/sea-green mélange and 3.5 mm circular ndl cast on (128) 136 (144) 152 (160) 168 sts. Join and work 3 cm ribbing k1, p1 in rnds.

Change to 4 mm circular ndl.

Insert marker at sides with (64) 68 (72) 76 (80) 84 sts for each part.

Cont St-st until garment meas approx (20) 24 (27) 31 (32) 34 cm.

Cast off 8 sts at each side for armholes (= 4 sts at each side of markers).

Put aside and work sleeves.

SLEEVES

With burnt tawny/sea-green mélange and 3.5 mm double pointed ndls cast on (32) 34 (36) 36 (38) 38 sts. Join and work 3 cm ribbing k1, p1 in rnds.

Change to 4 mm double pointed ndls.

Insert marker around first and last st of rnd.

Cont St-st and when sleeve meas approx 5 cm inc 1 st at each side of marker.

Rep inc approx every (3) 3 (3) 2½ (2½) 2½ cm until (44) 48 (52) 56 (60) 64 sts.

Cont until sleeve meas (24) 27 (30) 33 (36) 40 cm, or suitable length.

Cast off 8 middle underarm sts (= marked sts + 3 sts at each side).

Put aside and work other sleeve the same.

ROUND YOKE

Transfer sleeve sts to the circular 4 mm garment ndl, placing one sleeve above each armhole cast-off = (184) 200 (216) 232 (248) 264 sts.

Rnd beg at a junction on the back.

Work (0) 1 (2) 0 (1) 2 rnds St-st.

Cont diagram for chosen size and dec as shown in diagram = (92) 100 (108) 116 (124) 132 sts.

TIPS: For extra height at back, cont with burnt tawny/ sea-green mélange and work German Short Rows as follows:

Insert marker at middle back, work (30) 32

(34) 36 (38) 40 sts pass marker, turn, sl first st p-wise with yarn in front of work, lead yarn over right ndl, pull yarn firmly at back of work until 2 loops on right ndl, work until (30) 32 (34) 36 (38) 40 sts pass marker.

Work in the same manner, but turn 5 sts before previous turning until a total of 2 times at each side.

Work 1 rnd St-st over all sts, at the same time work loops tog to avoid holes.

Leave sts on ndl.

FINISHING

Sew underarm openings.

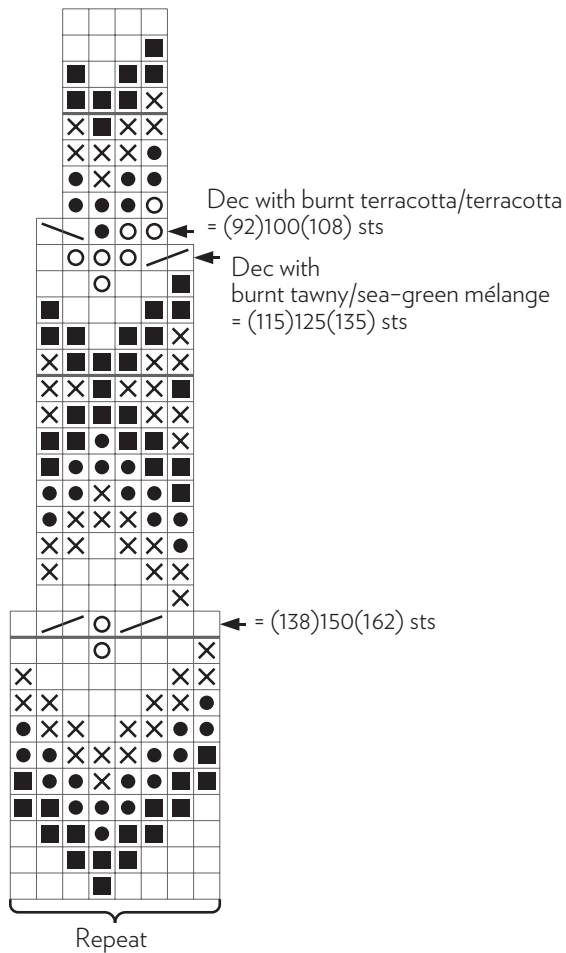
NECKBAND

Change to small 3.5 mm circular ndl. Work 6 cm ribbing k1, p1 in rnds, while dec (14) 20 (26) 32 (38) 44 sts evenly spaced on first rnd = (78) 80 (82) 84 (86) 88 sts.

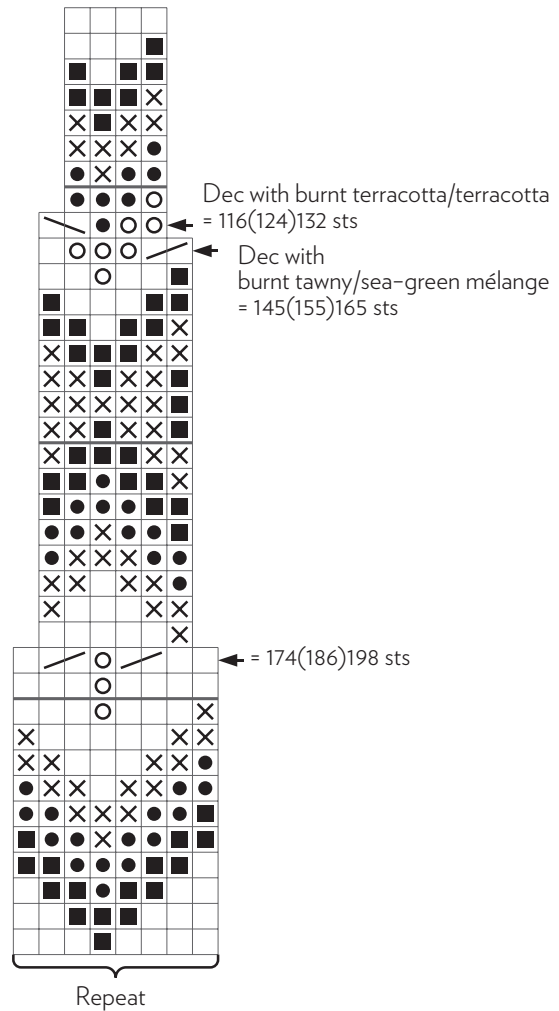
Cast off rib-wise

Fold neckband to WS and sew loosely with hidden sts.

Size (2)4(6) yrs



Size 8(10)12 yrs



- Burnt tawny/Sea-green mélange
- Wine/Green
- Old rose/Natural
- ⊗ Lt.sea-green/Amber
- Burnt terracotta/Terracotta
- ↘ k2tog
- ↙ sl 1 and transfer this stl
k-tbl back to left ndl, k2tog tbl