

# ©RRECTION 2409

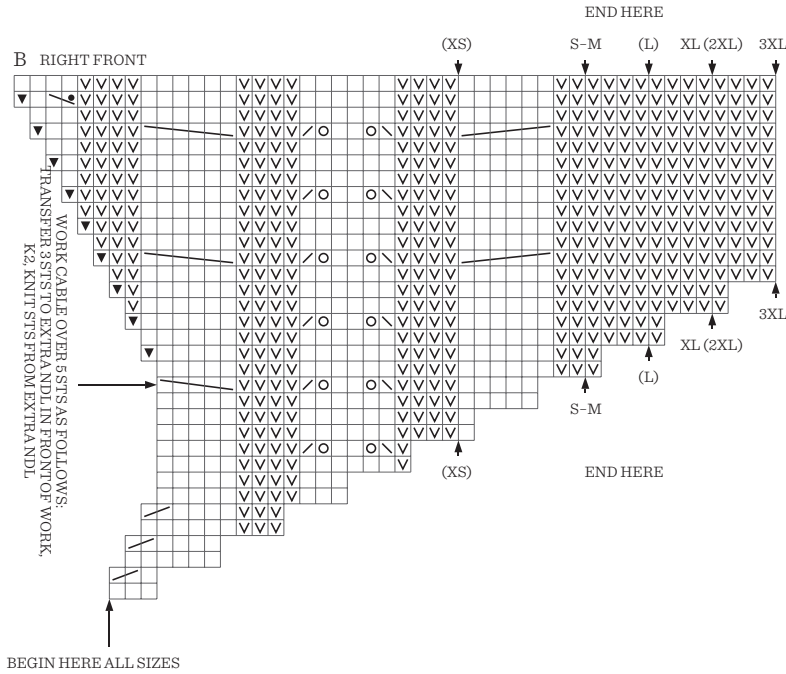
## NR 4 LUMEN CARDIGAN

### BACK AND FRONT

Work 32 rows rib-pattern back and forth inside 1 edge st on each side.

Change to 3 mm circular ndl, and work next row from WS as follows:

## NR 5 CORNELIA SWEATER



K

P

K2TOG TBL

YO

K2TOG

TRANSFER 3 STS TO EXTRA NDL IN FRONT OF WORK,  
K3, KNIT STS FROM EXTRA NDL

KNIT 2ND ST K TBL AT BACK OF 1ST ST, KNIT 1ST ST,  
LIFT BOTH STS OFF NDL

KNIT 2ND ST, KNIT 1ST ST,  
LIFT BOTH STS OFF NDL

TRANSFER 3 STS TO EXTRA NDL IN BACK OF WORK,  
K3, KNIT STS FROM EXTRA NDL

P2TOG

WORK K1 AND K1 TBL IN SAME STITCH

## NR 8 CORNELIA CARDIGAN

### BACK AND FRONT

Change to 4 mm circular ndl and work 8 cm ribbing back and forth as follows:

(First row = WS): Work 1 edge st, k2, \*p2, k2\*, rep from \*-\* to end of row, end with 1 edge st.

### SLEEVES

Knit 1 rnd, at the same time adjust number of sts to (80) 80 (84) 84 (94) 94.

Cont in rnds according to diagram C as follows:

Work (10) 10 (12) 12 (17) 17 p sts, work 60 sts diagram C, work p to beg of rnd.

Cont in rnds in this order until sleeve meas 36 cm, or until 12 cm before suitable length.

End with at least 3 rnds without cable twisting.

### FOR SIZE (XS) S-M (L) XL

Work 1 rnd with dec and inc before ribbing as follows:

Work p1, inc p1, work p until marker, work last rnd of diagram C until marker, work p until 1 st before beg of rnd, inc p1, p1 = (~~76~~) 76 (80) 80 sts.

## NR 8 CORNELIA CARDIGAN

### DIAGRAM EXPLANATION

- K ON RS, P ON WS
- P ON RS, K ON WS
- SL 1 K-WISE, TRANSFER ST TBL BACK TO LEFT NDL AND K2TOG TBL.
- K2TOG
- INC LEFT
- INC RIGHT
- K2TOG
- YO
- K2TOG TBL
- TRANSFER 3 STS TO EXYTRA NDL IN BACK OF WORK, K3, KNIT STS FROM EXTRA NDL
- TRANSFER 3 STS TO EXTRA NDL IN FRONT OF WORK, K3, KNIT STS FROM EXTRA NDL
- CAST ON 1 NEW STITCH
- P2TOG

## NR 10 AGNES CARDIGAN

### YARN REQUIRED

TYNN PEER GYNT

Dk. chocolate #3880: (6) 7 (8) 8 (9) 10 (11) 12 (12) balls

TYNN SILK MOHAIR

Dk. chocolate #3880: (5) 5 (6) 7 (7) 8 (9) 10 (11) balls

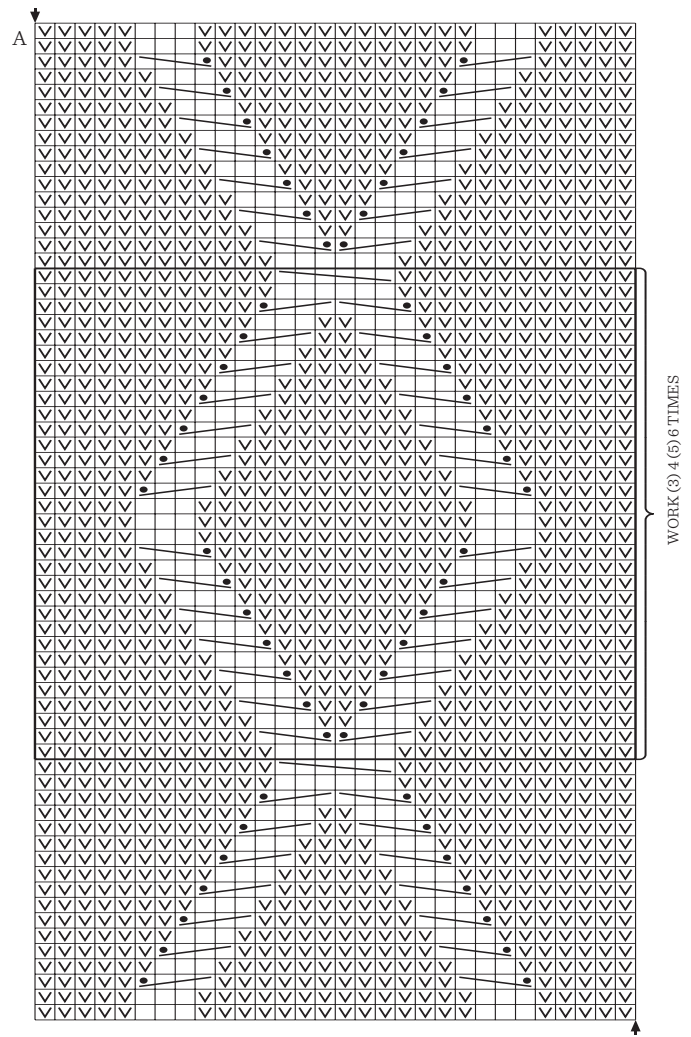
## NR 12 SCARLETT CARDIGAN

### DIAGRAM EXPLANATION

- P ON RS, K ON WS

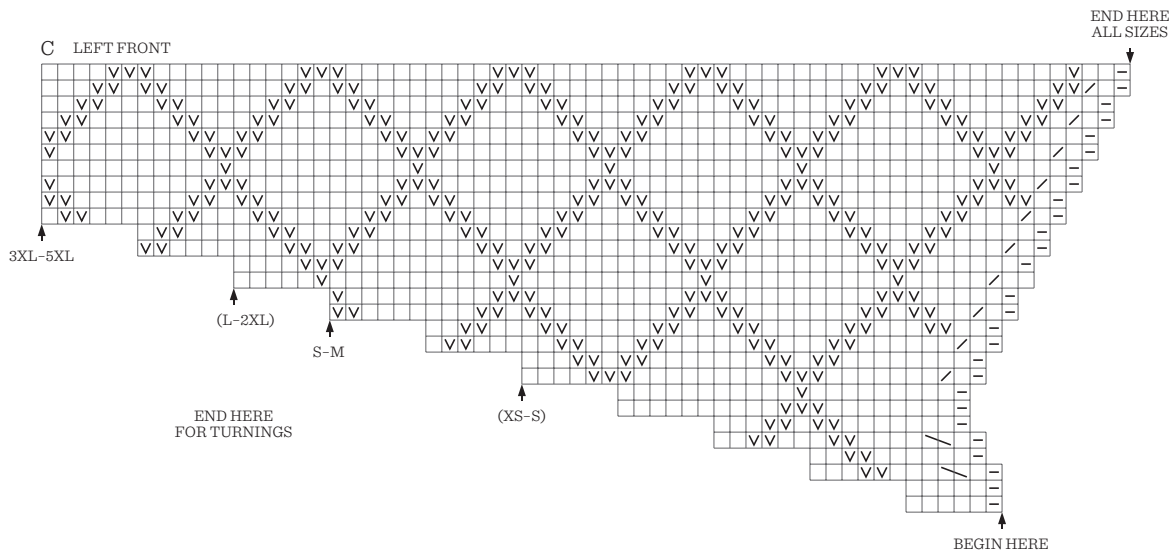
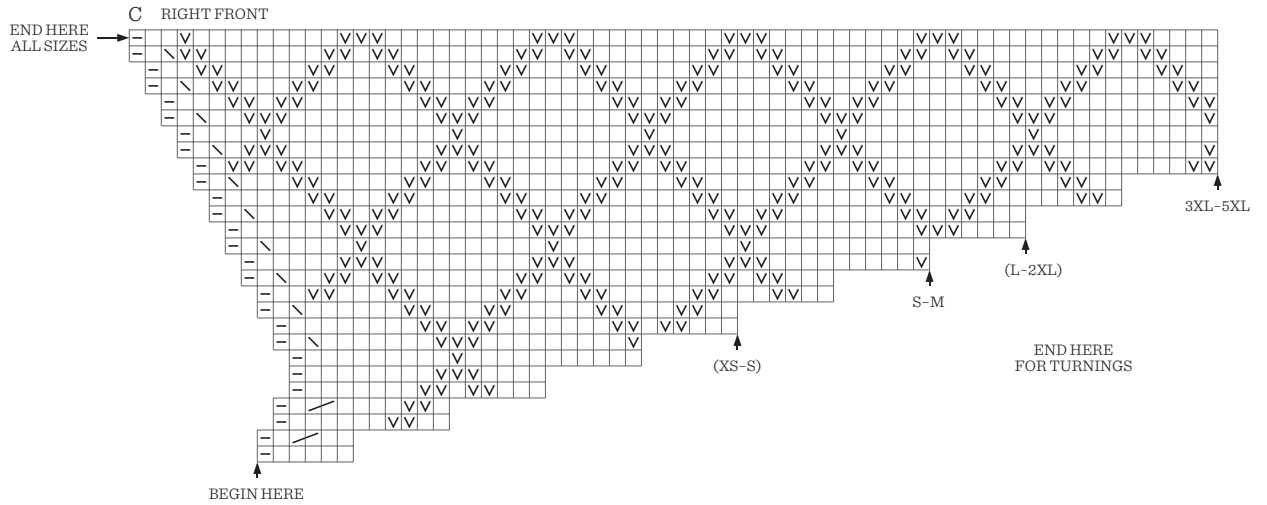
## NR 13 HEATHER SWEATER CABLE EDITION

END HERE



BEGIN HERE

# NR 13 HEATHER SWEATER CABLE EDITION



- K ON RS, P ON WS
- P ON RS, K ON WS
- EDGE ST
- SL 1 K-WISE, TRANSFER ST TBL BACK TO LEFT NDL  
AND K2TOG TBL
- K2TOG
- INC LEFT
- INC RIGHT