



No 6

UNICORN
SWEATER*Design: Sandnes Garn
Instruction: Olaug Beate Bjelland***Size:**
(2) 4 (6) 8 yrs**Measurements:**

Chest width: (62) 71 (80) 80 cm
Length: approx (36) 40 (44) 48 cm
Sleeve length: (25) 29 (31) 35 cm, or
suitable length
All measurements are for the finished garment
= personal body measurements + movement
allowance. The measurements are all according
to given tension.

Yarn:
SISU (80 % wool, 20 % nylon, 50 g =
175 m)**Alternative yarn:**

MINI ALPAKKA, MANDARIN PETIT,
ALPAKKA SILKE, TYNN
MERINOULL, BABYULL LANETT,
TYNN ALPAKKA ULL

Note: If alternative yarn is chosen be sure to
check the yardage on label. The image of
garment might change by using alternative yarn

Yarn required:

Rose-cheek #4012: (3) 4 (5) 5 balls
Lt.purple melange #5224: 1 ball all
sizes
Tapenade #2153: 1 ball all sizes

Suggested knitting needles:

Circular and double pointed 2.5 mm
and 3 mm
Needle sizes are only suggestions. If your
knitting shows tighter tension, use thicker
needles, for looser tension use thinner needle

Tension:

27 sts St-st with 3 mm ndls = 10 cm

Back and front:

With rose-cheek and 2.5 mm circular
ndl cast on (168) 192 (216) 216 sts.
Join and work (4) 4 (5) 5 cm ribbing
k1, p1 in rnds.
Insert marker at sides with (84) 96
(108) 108 sts for each part.
Change to 3 mm circular ndl, join and
work 3 rnds St-st.
Work **diagram** and beg at arrow as
shown.

Cont St-st with rose-cheek until
garment meas (22) 26 (29) 32 cm.
Insert marker at middle front.
Cast off (6) 8 (10) 10 sts at each side
for armholes (= (3) 4 (4) 5 sts at each
side of markers).
Put aside and work sleeves.

Sleeves:

With rose-cheek and 2.5 mm double
pointed ndls cast on (44) 46 (48) 52
sts. Join and work (4) 4 (5) 5 cm
ribbing k1, p1 in rnds.
Insert marker around first and last st
of rnd.
Change to 3 mm double pointed ndls,
cont St-st in rnds, **at the same time**
inc 1 st at each side of marker every
2,5 cm until (60) 64 (68) 74 sts on rnd
Cont until sleeve meas (25) 29 (31)
35 cm, or suitable length.
Cast off (6) 8 (10) 10 middle
underarm sts.
Put aside and work other sleeve the
same.

Raglan:

Transfer sleeve sts to the circular 3
mm garment ndl, placing one sleeve
above each armhole cast-off = (264)
288 (312) 324 sts.
Insert marker at each junction.
Rnd beg at a junction on the back.
Cont St-st with rose-cheek, and dec
for raglan as follows: Sl 1, k1, psso
after each marker, and k2tog before
each marker = 8 sts dec.
Rep dec on alt rnds (16) 18 (21) 22
times = (136) 144 (144) 148 sts.
Transfer the (14) 16 (16) 18 middle
front sts to spare ndl for neck and
work to end of rnd. Cut yarn. Beg
again at neck working St-st back and
forth.
Cast off 3 sts at beg of every row at
each side, **at the same time** cont
raglan dec when possible 4 times
more.
NOTE: Work raglan dec on RS-rows.
Leave rem sts on ndl for neck.

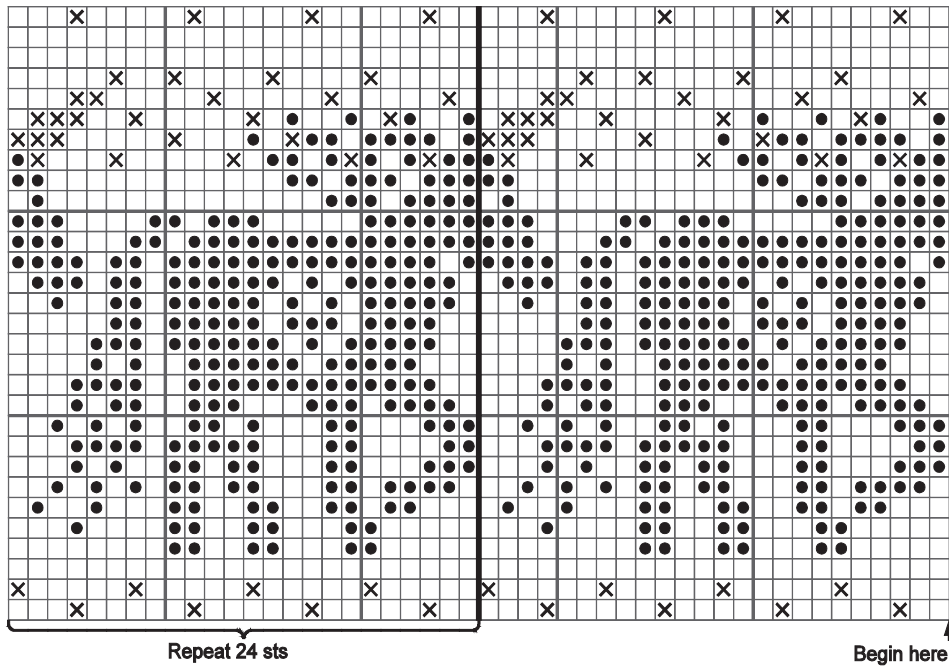
Finishing:

Sew underarm openings.

Neckband:

Transfer neck sts from ndl to small 2.5
mm circular ndl and at the same time
knit up sts at edge to approx (104)
108 (112) 116 sts.
Number of sts a multiple of 2.
Work approx (5) 5 (6) 6 cm ribbing k1,
p1 in rnds.
Cast off loosely rib-wise.

Fold neckband to WS and sew loosely
with hidden sts.



- ☐ Rose-cheek
- ☒ Lt.purple mélange
- ☒ Tapenade