



# No 3

## SWEATER

### W/Dragon Motif

Sweater w/round yoke  
Instruction: Olaug Beate Bjelland

**Size:**  
(2) 4 (6) 8 (10) yrs

#### Measurements:

Chest width: (64) 68 (71) 76 (81) cm  
Length: (36) 40 (44) 48 (52) cm  
Sleeve length: (25) 29 (31) 35 (38) cm, or suitable length  
All measurements are for the finished garment = personal body measurements + movement allowance. The measurements are all according to given tension.

**Yarn:**  
SISU (80 % wool, 20 % nylon, 50 g = 175 m)

#### Alternative yarn:

MINI ALPAKKA, MANDARIN PETIT, ALPAKKA SILKE, TYNN MERINOULL, BABYULL LANETT, TYNN ALPAKKA ULL

Note: If alternative yarn is chosen be sure to check the yardage on label. The image of garment might change by using alternative yarn

#### Yarn required:

Lt.grey melange #1032: (3) 4 (5) 5 (6) balls  
Dk.curry #2336: 1 ball all sizes  
Golden brown #2564: 1 ball all sizes

#### Suggested knitting needles:

Circular and double pointed 2.5 mm and 3 mm  
Needle sizes are only suggestions. If your knitting shows tighter tension, use thicker needles, for looser tension use thinner needle

#### Tension:

27 sts St-st with 3 mm ndls = 10 cm

#### Back and front:

With Lt.grey melange and 2.5 mm circular ndl cast on (172) 184 (192) 204 (220) sts. Join and work (4) 4 (5) 5 (6) cm ribbing k1, p1 in rnds. Insert marker at sides with (87) 93 (97) 103 (111) sts for the front and (85) 91 (95) 101 (109) sts for the back.  
Change to 3 mm circular ndl and cont St-st in rnds until garment meas (23) 26 (29) 32 (35) cm.

Insert marker around the middle front st.

Cast off (8) 8 (10) 10 (12) sts at each side for armholes (= (4) 4 (5) 5 (6) sts at each side of markers).

Put garment aside and work sleeves.

#### Sleeves:

With Lt.grey melange and 2.5 mm double pointed ndls cast on (44) 48 (48) 52 (52) sts. Join and work (4) 4 (5) 5 (6) cm ribbing k1, p1 in rnds.

Insert marker around first and last st of rnd.

Change to 3 mm circular ndl, cont St-st, **while** inc 1 st at each side of marker.

Rep inc every (3½) 3½ (3) 3½ (2½) cm until (56) 62 (64) 68 (76) sts on rnd.

Cont until sleeve meas (25) 29 (31) 35 (38) cm, or suitable length

Cast off (8) 8 (10) 10 (12) middle underarm sts.

Put aside and work other sleeve the same.

#### Yoke:

Transfer sleeve sts to the circular 3 mm garment ndl, placing one sleeve above each armhole cast-off = (252) 276 (280) 300 (324) sts.

Rnd beg at a junction on the back.

Work (1) 2 (4) 6 (8) rnds St-st, **while** adjusting number of sts to (253) 276 (276) 299 (322) on first rnd.

Next rnd dec as follows:

\*k2, k2tog\*, rep from \*-\* in the rnd = (242) 264 (264) 286 (308) sts.

Work **diagram**, and count from middle front st to establish beg of diagram.

**NOTE:** If necessary move beg of rnd a few sts to start with a full pattern repeat (= diagram).

**TIPS:** Twist yarns on WS to avoid long floats of 5 sts or more. Ensure keeping the work elastic and smooth while working the pattern.

Dec as shown in diagram = (132) 144 (144) 156 (168) sts.

K (2) 4 (4) 5 (5) rnds and dec on last rnd as follows:

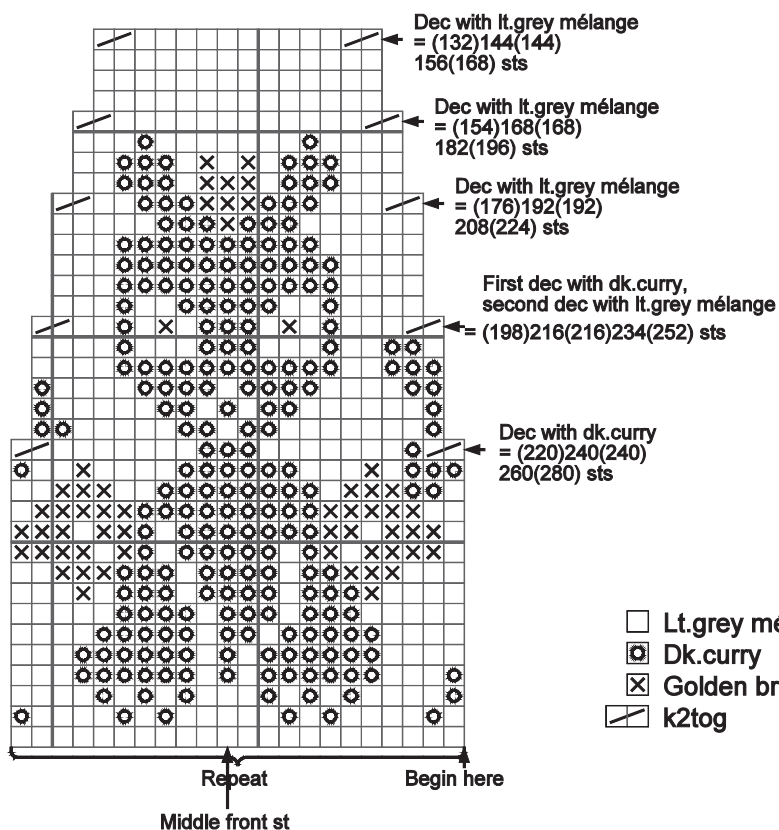
\*k4, k2tog\*, rep from \*-\* in the rnd = (110) 120 (120) 130 (140) sts.

Work extra height at back using «German short rows» as follows:

Insert marker around the middle back st and turn work (28) 30 (30) 32 (34) sts after marker, sl 1 st over to right ndl with yarn in front of work, lead yarn over right ndl and pull yarn firmly at the back until 2 loops on right ndl, work (55) 59 (59) 63 (67) sts, turn, sl 1 st over to right ndl with yarn in front of work, lead yarn over right ndl and pull yarn firmly at the back until 2 loops on right ndl.

Cont in this manner but turn 4 sts before previous turning twice more at each side.

K 1 rnd over all sts, and work loops tog to avoid holes.



□ Lt.grey melange  
◻ Dk.curry  
X Golden brown  
/ k2tog

K (1) 1 (3) 5 (5) rnds, **at the same time** dec evenly spaced on last rnd to (104) 108 (112) 116 (120) sts.

**Finishing:**

Sew underarm openings.

**Neckband:**

Change to small 2.5 mm circular ndl and work approx (5) 6 (6) 7 (7) cm ribbing k1, p1 in rnds.

Cast off loosely rib-wise.

Fold neckband to WS and sew loosely with hidden sts