



No 2

# SWEATER

## W/BAT PATTERN

*Raglan sweater w/bat pattern*

*Instruction: Anita Brathetland*

### Sizes:

(2-4) 6 (8) 10 (12) yrs

### Measurements:

Chest width: (65) 71 (77) 83 (89) cm  
Length: approx (36-40) 44 (48) 50 (52) cm

Sleeve length: (24-27) 30 (33) 36 (40) cm, or suitable length

All measurements are for the finished garment = personal body measurements + movement allowance. The measurements are all according to given tension.

### Yarn:

SISU (80 % wool, 20 % nylon, 50 g = 175 m)

### Alternative yarn:

MINI ALPAKKA, MANDARIN PETIT, ALPAKKA SILKE, TYNN MERINOULL, BABYULL LANETT, TYNN ALPAKKA ULL

Note: If alternative yarn is chosen be sure to check the yardage on label. The image of garment might change by using alternative yarn

### Yarn required:

Yellow sand #2134: (3) 4 (4) 5 (6) balls

Golden brown #2564: (2) 2 (2) 3 (3) balls

### Suggested knitting needles:

Circular and double pointed ndls 2.5 mm and 3 mm

Needle sizes are only suggestions. If your knitting shows tighter tension, use thicker needles, for looser tension use thinner needle

### Tension:

27 sts St-st with 3 mm ndls = 10 cm

### Sleeves:

With yellow sand and 2.5 mm double pointed ndls cast on (44) 46 (48) 50 (52) sts. Join and work (3) 3 (4) 4 (4) cm ribbing k1, p1 in rnds.

Change to 3 mm double pointed ndls.

Insert marker on first st of rnd.

Cont **diagram** in St-st until sleeve meas 6 cm, and count from center of sleeve to establish beg of diagram.

Inc 1 st at each side of marked st.

Cont **diagram** and rep inc every (1½-2) 2 (2) 2 (2) cm until (64) 68 (72) 76 (80) sts on rnd. Work new sts in diagram as they arise.

Cont until sleeve meas (24-27) 30 (33) 36 (40) cm.

Cast off 9 middle underarm sts (= marked st + 4 sts at each side).

Put aside and work other sleeve the same.

### Back and front:

With yellow sand and 2.5 mm circular ndl cast on (176) 192 (208) 224 (240) sts. Join and work (3) 3 (4) 4 (4) cm ribbing k1, p1 in rnds.

Change to 3 mm circular ndl.

Insert marker around one st at each side with med (87) 95 (103) 111 (119) sts between markers.

Cont **diagram** in St-st until garment meas (22-26) 29 (32) 33 (33) cm, and beg at arrow for chosen size. Meas on sleeve where to start diagram for ending with the same pattern-rnd on garment.

Cast off 9 sts at each side for armhole (marked st + 4 sts at each side).

### Raglan:

Transfer sleeve sts to the circular 3 mm garment ndl, placing one sleeve above each armhole cast-off = (268) 292 (316) 340 (364) sts.

Work 1 rnd **diagram**, k2tog at each junction, and insert marker on each of these 4 sts = (264) 288 (312) 336 (360) sts and 4 markers.

Work marked sts in yellow sand further.

Cont **diagram** and dec for raglan at each marker as follows:

Work until 1 st before marker, sl 2 k-wise (as working k2tog), k1, pssso = 8 sts dec.

Rep dec on alt rnds a total of (13) 15 (16) 18 (19) times = (160) 168 (184) 192 (208) sts.

Transfer the (15) 17 (17) 19 (21) middle front sts to spare ndl for neck.

Work to end of rnd, cut yarn and beg again at neck.

Cont **diagram** back and forth, and cast off 2 sts at beg of every row, **at the same time** cont raglan dec as before where possible (8) 8 (9) 9 (10) times more and until (21) 23 (25) 27 (29) times over sts for the back.

**NOTE:** Dec for raglan on RS rows.

Leave rem sts on ndl for neck.

### Finishing:

Sew underarm openings.

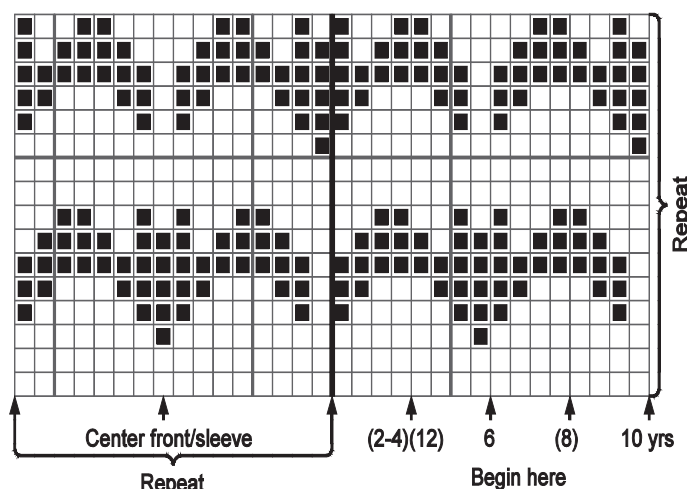
### Neckband:

Transfer sts from spare ndl to 2.5 mm circular ndl, and at the same time knit up sts at neck edge with yellow sand. K 1 rnd and at the same time adjust number of sts to (104) 108 (112) 116 (120).

Work 8 cm ribbing k1, p1 in rnds.

Cast off rib-wise.

Fold neckband to WS and sew loosely with hidden sts.



□ Yellow sand  
■ Golden brown