



No 7

ALBA
SWEATERSweater w/cable pattern
Instruction: Åsa Christiansen

Sizes:

(XXS-XS) S-M (L-XL) XXL-XXXL

Measurements:

Bust: approx (84) 101 (118) 135 cm

Length: approx (55) 56 (58) 60 cm

Sleeve length: 47 cm, or suitable length

All measurements are for the finished garment = personal body measurements + movement allowance. The measurements are all according to given tension.

Yarn:

KOS (62 % baby alpaca, 9 % wool, 29 % nylon, 50 g = 150 m)

TYNN SILK MOHAIR (57 % mohair, 28 % silk, 15 % wool, 25 g = 212 m)

Yarn required:

KOS

Dusty pastel green #8521: (6) 7 (7) 8 balls

TYNN SILK MOHAIR

Dusty pastel green #8521: (4) 5 (5) 6 balls

Suggested knitting needles:

Circular and double pointed 5 mm and 5.5 mm

Needle sizes are only suggestions. If your knitting shows tighter tension, use thicker needles, for looser tension use thinner needle

Tension:

19 sts pattern with double yarn and 5.5 mm ndls = 10 cm

Work garment with double yarn,
1 strand KOS and 1 strand TYNN
SILK MOHAIRWhen too few sts for twisting of
cable, work St-st over these sts.

Back and front:

With double yarn and 5 mm circular ndl cast on (160) 192 (224) 256 sts. Join and work 6 cm ribbing as follows: k1, p2, *k2, p2*, rep from *-* end with k1.

Insert marker at sides with (80) 96 (112) 128 sts for each part.

Change to 5.5 mm circular ndl and work diagram **A** until garment meas approx (35) 35 (36) 37 cm.

Cast off (8) 10 (12) 14 sts at each side for armholes (= (4) 5 (6) 7 sts at each side of markers).

Work each side separately.

NOTE: Work cable twists on RS rows.

Edge st: k every row

Back:

= (72) 86 (100) 114 sts.

Cont diagram **A** back and forth inside 1 edge st at each side and cast off for armhole at beg of every row at each side:

Size (XXS-XS): 1 st 3 times,

Size S-M: 2 sts once, 1 st 3 times,

Size (L-XL): 3 sts twice, 2 sts once, 1 st twice,

Size: XXL-XXXL: 3 sts 4 times, 2 sts once, 1 st once = (66) 76 (80) 84 sts.

Cont until armhole meas approx (16) 17 (18) 19 cm.

Cast off (19) 22 (23) 24 sts at each side for shoulder. Cont 2 cm over the (28) 32 (34) 36 middle sts and transfer these sts to spare ndl.

Front:

= (72) 86 (100) 114 sts.

Work and cast off for armhole in the same manner as at the back = (66) 76 (80) 84 sts.

Cont until armhole meas approx (13) 14 (15) 16 cm.

Transfer the (20) 22 (24) 26 middle sts to spare ndl for neck and work each side separately.

Cast off at beg of every row at neck 2 sts (1)2(2)2 times, 1 st (2)1(1)1 time, Cont until armhole meas approx (16) 17 (18) 19 cm.

Cast off the (19) 22 (23) 24 shoulder sts.

Work other side the same but in a mirror image.

Sleeves:

With double yarn and 5 mm double pointed ndls cast on (28) 28 (36) 36 sts. Join and work 6 cm ribbing in rnds as follows: p1, k2, *p2, k2*, rep from *-*, end with p1.

Change to 5.5 mm double pointed ndls and insert marker around first and last st.

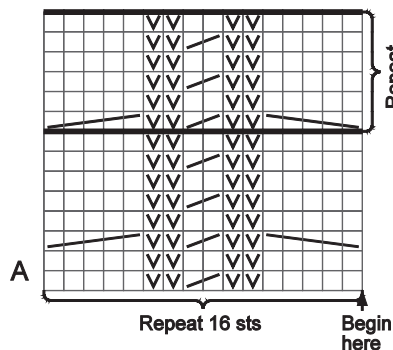
Work diagram **B** and when sleeve meas 7 cm inc 1 st at each side of marker.

Rep inc every (3) 2½ (3) 2½ cm until (52) 56 (60) 64 sts on rnd, and p new sts.

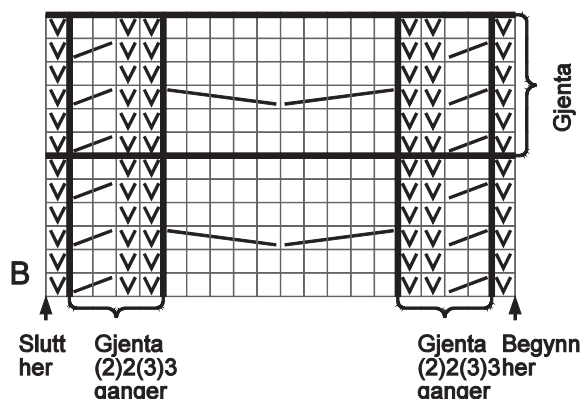
Cont until sleeve meas 47 cm, or suitable length.

Cast off (8) 10 (12) 14 middle underarm sts (= marked sts + (3) 4 (5) 6 sts at each side).

Cont back and forth and cast off 1 st at beg of every row a total of (14) 15 (16) 17 times = 16 sts rem.



- ☐ k on RS, p on WS
- ☒ p on RS, k on WS
- ☒ k second st in front of first st, k first st
- ☒ transfer 2 sts to spare ndl and hold in back of work, k3, k sts from spare ndl
- ☒ transfer 3 sts to spare ndl and hold in front of work, k2, k sts from spare ndl



NOTE: Work cable twists on RS rows.
Sleeve cap will now fit into armhole at back/front.

Saddle shoulder:

Cont approx (9½) 10½ (11) 11½ cm inside 1 edge st at each side. Shoulder edges should match length of the cast off shoulder sts on back/front with these slightly stretched.

Leave sts on spare ndl.

Put aside and work other sleeve in the same manner

Finishing:

Sew sleeves to back and front at shoulder and armhole.

Neckband:

With double yarn and small 5 mm circular ndl knit sts from spare ndl and knit up sts at neck edge.

Work 1 rnd St-st over all sts, **at the same time** adjust number of sts to approx (76) 80 (84) 88.

Number of sts a multiple of 4.

Work 8 cm ribbing k2, p2 in rnds.

Cast off suitably firm.

Fold neckband to WS and sew loosely with hidden sts.

