



No 8

## CABLE SOCKS

*Socks worked from toe up**Instruction: Olaug Beate Bjelland***Shoe sizes (EU):**

(28-31) 32-35 (36-38) 39-42

**Yarn:**

PERFECT (80% wool, 20% nylon, 50 g = 100 m)

**Alternative yarn:**

KlompelOMPE SPØT

**Yarn required:**

Dk.green #8063/Dill #8552: (2) 2 (3) 3 balls

**Suggested knitting needles:**

Double pointed 3.5 mm or circular using magic loop

Needle sizes are only suggestions. If your knitting shows tighter tension, use thicker needles, for looser tension use thinner needle

**Tension:**

22 sts St-st with 3.5 mm ndls = 10 cm

**Inc for toe in this manner:**\*Work 1 st, inc left as follows:

Pick up yarn before next st, transfer new st k-wise to left ndl and k tbl new st.

Work until 1 st rem at other side, inc right as follows:

Pick up yarn before next st, transfer st k tbl to left ndl and k new st, work 1 st\*, rep from \*-\*.

**Beg at toe:**

With 3.5 mm double pointed ndls cast on (12) 12 (16) 16 sts. Join and k 1 rnd.

Insert marker at each side with (6) 6 (8) 8 sts for each part.

Cont St-st and inc for toe as explained = 4 sts inc.

Rep inc on alt rnds until (36) 40 (44) 48 sts on rnd.

Work diagram **A** over the 10 middle instep sts, and St-st over rem sts until foot meas approx (13-14) 15-16 (17-18) 19-20 cm.Work (18) 20 (22) 24 sole sts to a marking thread (in contrast color) for heel, transfer sts back to left ndls and cont in rnds 2 cm further, **at the same time** inc (4) 0 (4) 0 sts evenly spaced on last rnd (do not inc over the 10

middle instep sts) = (40) 40 (48) 48 sts.

Work (10) 11 (14) 16 cm diagram **B** over all sts.**NOTE:** Adjust diagram **B** in accordance with diagram **A**.Cast off loosely k-wise.**Heel:**

Pick up 1 st in each st at both sides of marking thread = (36) 40 (44) 48 sts.

Pull out marking thread and k 1 rnd.

Insert marker at each side with (18) 20 (22) 24 sts for each part.

\*Dec on next rnd as follows: work 1 st, k2tog, work until 3 sts rem before marker, sl 1 k-wise, transfer st k tbl back to left ndl and k2tog tbl, end with k1\*, rep from \*-\*.

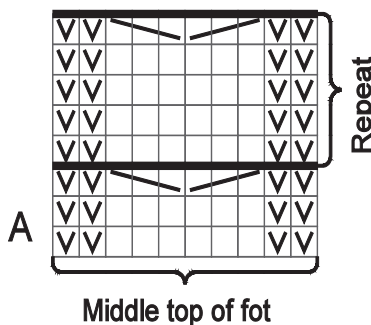
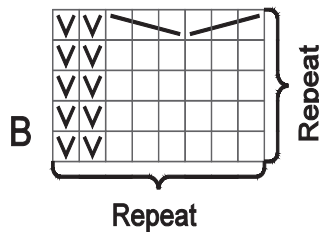
Rep dec on alt rnds until 8 sts rem



Cut yarn and fasten well.

Sew tog at toe.

Fasten all yarn ends on WS.

Work other sock in the same manner



- ☐ k
- ☒ p
-  Transfer 1 st to extra ndl and hold in back of work, k2, k st from extra ndl
-  Transfer 2 sts to extra ndl and hold in front of work, k1, k sts from extra ndl