



MONTHLY
FREE PATTERN



SONJA'S SWEATER

SWEATER W/CABLES / DESIGN: SANDNESGARN / INSTRUCTION: LIV STANGELAND

SIZES

(XXS) XS (S) M (L) XL (XXL)

MEASUREMENTS

Bust approx: (83) 88 (93) 100 (108) 115 (123) cm

Length approx: (55) 55 (56) 57 (58) 60 (62) cm

Sleeve length: 46 cm, or suitable length

All measurements are for the finished garment = personal body measurements + movement allowance. The measurements are all according to given tension.

YARN

KOS (62 % baby alpaca, 9 % wool, 29 % nylon, 50 g = 150 m)

YARN REQUIRED

Natural #1012: (6) 6 (7) 8 (8) 9 (10) balls

SUGGESTED KNITTING NEEDLES

Circular and double pointed 5 mm and 5.5 mm
Needle sizes are only suggestions. If your knitting shows tighter tension, use thicker needles, for looser tension use thinner needle.

TENSION

16 sts St-st and 20 sts diagram with 5.5 mm ndls = 10 cm

CHANGE TO NEW BALL OF YARN AT SIDES OF GARMENT

EDGE ST: K EVERY ROW

BACK AND FRONT

With 5 mm circular ndl cast on (136) 144 (152) 164 (176) 188 (200) sts. Join and work 4 cm ribbing in rounds, and beg as follows on front:

XXS, S, M, XXL: *k2, p2*, rep from *-* in the rnd.

XS, L, XL: *p2, k2*, rep from *-* in the rnd.

Insert marker at each side with (70) 74 (78) 86 (90) 98 (102) sts for front and (66) 70 (74) 78 (86) 90 (98) sts for the back.

Change to 5.5 mm circular ndl and cont in this manner: (18) 20 (22) 26 (28) 32 (34) sts St-st, work diagram. (18) 20 (22) 26 (28) 32 (34) sts St-st (= front), cont St-st to end of rnd = (140) 148 (156) 168 (180) 192 (204) sts. Cont in this order and when garment meas (34) 33 (33) 33 (33) 34 (35) cm cast off (8) 8 (10) 10 (12) 12 (14) middle sts at each side for armholes (= (4) 4 (5) 5 (6) 6 (7) sts at each side of marker) and work each side separately.

BACK

= (58) 62 (64) 68 (74) 78 (84) sts.

Cont St-st back and forth, at the same time cast off for armhole at beg of every row at each side 2 sts (1)1(1)1(2)2(2) times, 1 st (3)4(4)5(5)5(5) times = (48) 50 (52) 54 (56) 60 (66) sts. Cont until armhole meas (19) 20 (21) 22 (23) 24 (25) cm.

Shape and cast off for shoulder at beg of every row from armhole side 3 sts (2)1(1)0(0)0(0) times, 4 sts (1)2(2)3(3)1(0) times, 5 sts (0)0(0)0(0)2(2) times, 6 sts (0)0(0)0(0)0(1) time.

Transfer rem (28) 28 (30) 30 (32) 32 (34) sts for neck to spare ndl.

FRONT

= (66) 70 (72) 80 (82) 90 (92) sts.

Cont in the same order as before and cast off for armhole at each side as the back, at the same time when front meas approx (48) 48 (49) 50 (51) 52 (53) cm cast off the 18 middle sts for neck and work each side separately.

Cast off at neck on alt rows 4 sts (1)1(2)2(2)3(2) times, 2 sts (2)2(0)2(1)0(2) times, 1 st (1)1(2)0(1)1(0) time, at the same time shape and cast off for shoulder in the same manner and at the same height as the back.

Work other side the same and in a mirror image.

SLEEVES

With 5 mm double pointed ndls cast on (32) 32 (32) 36 (36) 40 (40) sts. Join and work 4 cm ribbing k2, p2 in rnds.

Change to 5.5 mm double pointed ndls and cont St-st. When sleeve meas (7) 7 (5) 7 (5) 7 (7) cm insert marker around first and last st of rnd, and inc 1 st at each side of marker (= pick up yarn between 2 sts and k tbl this new st).

Rep inc every 2½ cm until (58) 58 (60) 62 (64) 66 (68) sts on rnd. Cont until sleeve meas 46 cm, or suitable length.

Cast off (8) 8 (10) 10 (12) 12 (14) middle underarm sts.

Sleeve cap:

Cont St-st back and forth and cast off at beg of every row at each side, first 2 sts once, then 1 st until 30 sts rem on ndl. Cont until sleeve cap meas (16) 17 (18) 19 (20) 21 (22) cm, then work k3tog in the row = 10 sts. Work 1 row back. Cast off.

Work other sleeve in the same manner.

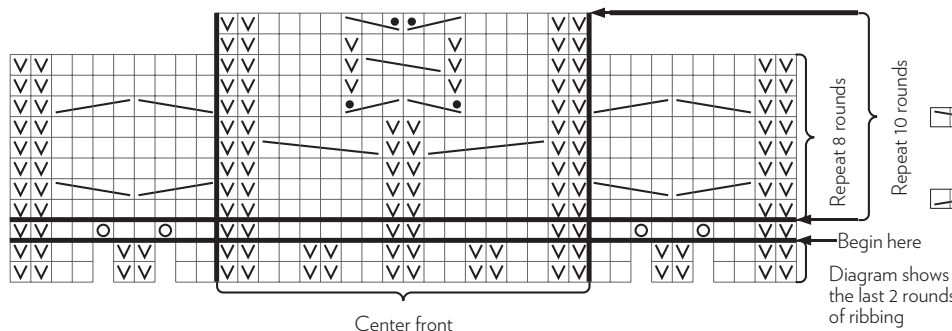
FINISHING








Sew shoulder seams.

Sew sleeves on.

With 5 mm circular ndl knit up at neck edge 1 st every st/row and join with neck sts on spare ndl to approx (72) 72 (76) 76 (80) 84 (88) sts (number of sts a multiple of 4).

Work 20 cm ribbing k2, p2 in rnds. Cast off rib-wise suitable firm.



- ☐ k on RS, p on WS
- ☒ p on RS, k on WS
-  transfer 4 sts to extra ndl and hold in back of work, k2, k sts from extra ndl
-  transfer 2 sts to extra ndl and hold in front of work, k4, k sts from extra ndl
-  transfer 1 st to extra ndl and hold in back of work, k2, p st from extra ndl
-  transfer 2 sts to extra ndl and hold in front of work, p1, k sts from extra ndl
-  inc 1 st = pick up yarn between 2 sts and k tbl this new st
-  transfer 2 sts to extra ndl and hold in front of work, k2, k sts from extra ndl
-  transfer 2 sts to extra ndl and hold in back of work, k2, k sts from extra ndl

SADNES
GARN

