



No 13

FOREST CLOVER

Sweater w/round yoke and clover pattern

Instruction: Åsa Christiansen

Sizes:

(1) 2-4 (6-8) 10 (12) yrs

Measurements:

Chest width: (60) 68 (75) 83 (90) cm

Length: approx (35) 41 (47) 53 (54) cm

Sleeve length: ca (22) 27 (32) 37 (37) cm

All measurements are for the finished garment = personal body measurements + movement allowance. The measurements are all according to given tension

Yarn:

KOS (62 % baby alpaca, 9 % wool, 29 % nylon, 50 g = 150 m)

Yarn required:

Dusty pastel blue #7522: (2) 3 (3) 4 (5) balls

Green melange #7270: (1) 1 (1) 1 (2) balls

Suggested knitting needles:

Circular and double pointed 5.5 mm
Needle sizes are only suggestions. If your knitting shows tighter tension, use thicker needles, for looser tension use thinner needle.

Tension:

16 sts St-st with 5.5 mm ndls = 10 cm

Back and front:

With dusty pastel blue and 5.5 mm circular ndl cast on (96) 108 (120) 132 (144) sts. Join and work 4 rnds ribbing k1, p1.

Insert marker on 1 st at each side with (47) 53 (59) 65 (71) sts between markers.

Work 2 rnds St-st, then cont diagram until work meas approx (22) 27 (32) 37 (37) cm. End with a full or half pattern.

Cast off 5 sts at each side for armholes (= marked st + 2 sts at each side).

Put garment aside and work sleeves.

Sleeves:

With dusty pastel blue and 5.5 mm double pointed ndls cast on (26) 28 (28) 32 (32) sts. Join and work ribbing as for back and front.

K 1 rnd, **while** inc (10) 14 (14) 16 (16) sts evenly spaced = (36) 42 (42) 48 (48) sts.

Insert marker on first st of rnd.

K 1 rnd, then cont diagram until work meas approx (22) 27 (32) 37 (37) cm. End with the same pattern rnd as back and front.

Cast off 5 center underarm sts

Put aside and work other sleeve the same.

Round yoke:

Transfer sleeve sts to the circular 5.5 mm garment ndl, placing one sleeve above each armhole cast-off = (148) 172 (184) 208 (220) sts.

Cont with dusty pastel blue as follows. k2tog at each junction = (144) 168 (180) 204 (216) sts.

Then p3, *k1tbl, p5*, rep from *-* end with k1 tbl, p2.

Work sts as they appear for 8 rnds.

P1, k2tog, *k1 tbl, p3, p2tog*, rep from

*-, end with k1 tbl, p2 = (120) 140 (150) 170 (180) sts.

Work sts as they appear for (3) 4 (4) 5 (6) rnds.

P2, *k1 tbl, p2tog, p2*, rep from *-* in the rnd, end with k1 tbl, p2tog = (96) 112 (120) 136 (144) sts.

Work sts as they appear for (3) 3 (4) 4 (5) rnds.

P2tog, k1 tbl, p1, rep from *-* in the rnd = (72) 84 (90) 102 (108) sts.

Work sts as they appear for (3) 3 (3) 3 (4) rnds.

P1, *k1 tbl, p2tog*, rep from *-* in the rnd.

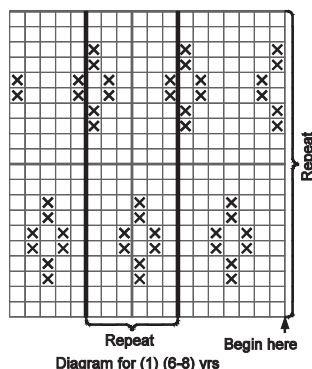
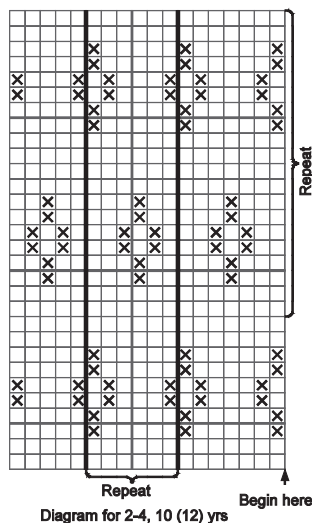
Next rnd: work last st tog with first st of rnd = (48) 56 (60) 68 (72) sts.

Work sts as they appear for (3) 3 (3) 3 (4) rnds.

Cast off rib-wise.

Finishing:

Sew armhole openings.



□ Dusty pastel blue
⊗ Green melange

