



No 4

STRIPED SWEATER

Raglan sweater w/stripes
Instruction: Anita Brathetland

Sizes:
(XS) S (M) L (XL) XXL (XXXL)

Measurements:
Bust: (86) 92 (98) 107 (114) 123 (130) cm
Length: approx (56) 57 (58) 60 (61) 62 (63) cm
Sleeve length: approx 47 cm, or suitable length
All measurements are for the finished garment = personal body measurements + movement allowance. The measurements are all according to given tension.

Yarn:
SISU (80 % wool, 20 % nylon, 50 g = 175 m)
BABYULL LANETT (100 % merino wool, 50 g = 175 m)

Alternative yarn:
MINI ALPAKKA, MANDARIN PETIT, ALPAKKA SILKE, TYNN MERINOULL
Note: If alternative yarn is chosen be sure to check the yardage on label. The image of garment might change by using alternative yarn

Yarn required:
SISU
Natural #1012: (3) 4 (4) 4 (5) 5 (6) balls
Yellow sand #2134: (1) 1 (2) 2 (2) 2 (2) balls
Olive green #9544: (1) 1 (2) 2 (2) 2 (2) balls
Rhododendron #4545: (1) 1 (2) 2 (2) 2 (2) balls
BABYULL LANETT
Dusty old rose #4023: (1) 1 (2) 2 (2) 2 (2) balls

Suggested knitting needles:
Circular and double pointed 2.5 mm and 3 mm
Needle sizes are only suggestions. If your knitting shows tighter tension, use thicker needles, for looser tension use thinner needle.

Tension:
27 sts St-st with 3 mm ndls = 10 cm

Sleeves:

With natural and 2.5 mm double pointed ndls cast on (50) 54 (54) 58 (58) 62 (62) sts. Join and work 3 cm ribbing k1, p1 in rnds.

Change to 3 mm double pointed ndls. Insert marker on first st of rnd.

Work **diagram** and when sleeve meas 5 cm inc 1 st at each side of marked st.

Cont **diagram** and rep inc approx every (2,5) 2,5 (2) 2 (2) 2 (1,5) cm until (82) 86 (90) 94 (98) 102 (106) sts on rnd.

Work new sts in diagram as they appear.

Cont until sleeve meas approx 47 cm, or suitable length, end with a full stripe.

Cast off (11) 11 (11) 11 (11) 15 (15) middle underarm sts (= marked st + (5) 5 (5) 5 (5) 7 (7) sts at each side).

Put aside and work other sleeve the same.

Back and front:

With natural and 2.5 mm circular ndl cast on (254) 270 (288) 312 (334) 358 (380) sts. Join and work 3 cm ribbing k1, p1 in rnds.

Change to 3 mm circular, k 1 rnd, **while** dec (22) 22 (24) 24 (26) 26 (28) sts evenly spaced = (232) 248 (264) 288 (308) 332 (352) sts.

Insert marker on 1 st at each side with (115) 123 (131) 143 (153) 165 (175) sts between markers.

Cont **diagram** until garment meas approx (37) 37 (37) 38 (38) 38 (38) cm. **NOTE:** Meas on sleeve to establish beginning of diagram to end with the same stripe at underarm.

Cast off (11) 11 (11) 11 (11) 15 (15) sts for armhole at each side (= marked st + (5) 5 (5) 5 (5) 7 (7) sts at each side).

Raglan:

Transfer sleeve sts to the circular 3 mm garment ndl, placing one sleeve above each armhole cast-off = (352) 376 (400) 432 (460) 476 (504) sts.

Rnd beg at a junction on the back. Work 1 rnd **diagram**, k2tog at each junction and insert marker on each of these sts = (348) 372 (396) 428 (456) 472 (500) sts on rnd, and 4 markers.

NOTE: Make sure the "dots" in diagram matches further on in work.

Cont **diagram** and dec for raglan at each marker as follows:

Work until 1 st before marker, sl 2 (as working k2tog), k1, pssso.

Rep dec on alt rnds (21) 23 (24) 26 (27) 28 (30) times = (180) 188 (204) 220 (240) 248 (260) sts.

Transfer the (17) 19 (21) 23 (25) 27 (31) middle front sts to spare ndl for neck.

TIPS: For a nice ending at neck work one more raglan dec to end with a full stripe before the transfer of neck sts to spare ndl.

Cut yarn and beg row again at neck. Cont **diagram** back and forth and cast off 2 sts at beg of every row further on, **at the same time** cont raglan dec as before (8) 8 (9) 9 (10) 11 (11) times more, and a total of (29) 31 (33) 35 (37) 39 (41) times of raglan dec over sts for the back.

NOTE: Dec for raglan on RS rows. Leave rem sts on ndl for neck.

Finishing:

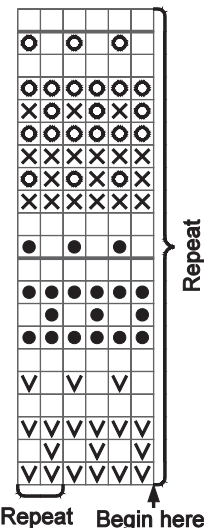
Sew underarm openings.

Neckband:

Transfer sts from ndls at neck to 2.5 mm circular ndl and with natural knit up sts at neck edge.

Work 1 rnd St-st, **while** adjusting number of sts to (128) 128 (132) 136 (140) 144 (148).

Work 6 cm ribbing k1, p1 in the rnd. Fold neckband double to WS and sew loosely with hidden sts.



- Natural
- Yellow sand
- Olive green
- Dusty old rose
- Rhododendron

