



# SILLE CARDIGAN

Cardigan w/round yoke  
Instruction: Sandnes Garn

**Sizes:**  
(XS) S (M) L (XL) XXL-XXXL

**Measurements:**  
Bust: (88) 96 (104) 114 (121) 129 cm  
Hem width: (99) 106 (114) 124 (131) 139 cm  
Length: (78) 79 (81) 82 (84) 85 cm, or suitable length  
Sleeve length: 47 cm, or suitable length  
All measurements are for the finished garment = personal body measurements + movement allowance. The measurements are all according to given tension.

**Yarn:**  
SISU (80 % wool, 20 % nylon, 50 g = 175 m)  
TYNN SILK MOHAIR (57 % mohair, 28 % silk, 15 % wool, 25 g = 212 m)

**Yarn required:**  
SISU  
Heather #4853: (5) 6 (6) 7 (8) 9 balls  
Natural #1012: 1 ball all sizes  
Lt.beige melange #2650: 1 ball all sizes  
TYNN SILK MOHAIR  
Dusty purple #5042: (4) 4 (5) 5 (6) 6 balls  
Natural #1012: 1 ball all sizes  
Pastel pink melange #4310: 1 ball all sizes

**Notions:**  
9 buttons

**Suggested knitting needles:**  
Circular and double pointed 5 mm and 6 mm  
Needle sizes are only suggestions. If your knitting shows tighter tension, use thicker needles, for looser tension use thinner needle.

**Tension:**  
16 sts St-st with **double yarn** (1 strand SISU + 1 strand TYNN SILK MOHAIR) and 6 mm ndls = 10 cm

**Work garment from neck down and with double yarn**

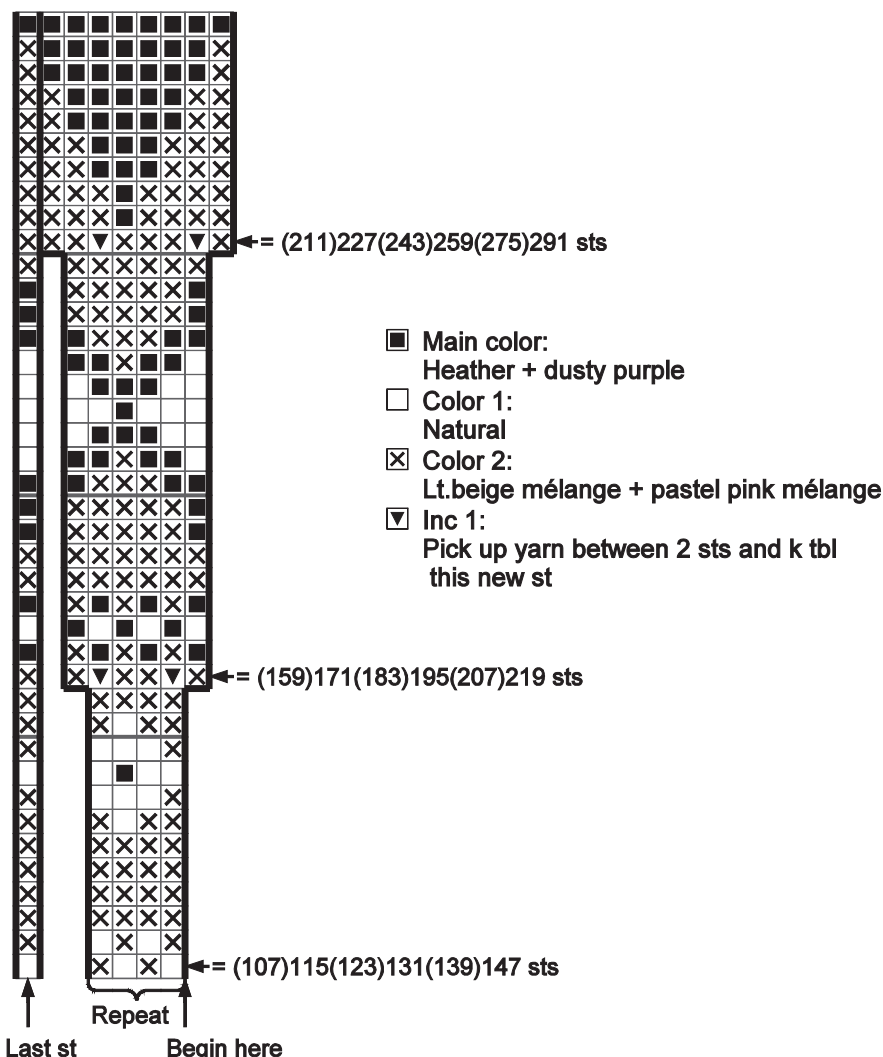
**Edge st: k every row**

**Color 1:** Natural  
**Color 2:** Lt.beige mélange + pastel pink mélange

**Yoke:**  
With main color and 5 mm circular ndl cast on (77) 81 (81) 85 (85) 89 sts. Work 4 cm ribbing back and forth as follows:  
1 edge st, p1, \*k1. p1\*, rep from \*-\*, end with 1 edge st, **while** inc on WS (30) 34 (42) 46 (54) 58 sts evenly spaced. (Inc = pick up yarn between 2 sts and k tbl this new st) = (107) 115 (123) 131 (139) 147 sts.  
Change to 6 mm circular ndl, cont St-st and work extra height at back using "German short rows" as follows:  
Work (80) 86 (92) 98 (104) 110 sts, turn, sl first st to right ndl with yarn in front of work, lead yarn over right ndl and pull firmly at the back until 2 loops on right ndl, work (52) 56 (60) 64 (68) 72 sts, turn, sl first st to right ndl with yarn in front of work, lead yarn over

until 2 loops on right ndl.  
Turn, work 5 sts passed previous turning once more at both sides and work loops tog to avoid holes. Work to end of row after last turning.

**NOTE:**  
When cont diagram further, k tog both yarns/colors at end of every row.  
Cont **diagram** inside 1 edge st at each side and inc as shown in diagram = (211) 227 (243) 259 (275) 291 sts.  
Cont in main color and work (0) 0 (2) 2 (4) 4 rows St-st inside edge sts.  
Divide work for sleeves, front and back as follows:  
Work (31) 34 (37) 40 (43) 46 sts for front, transfer (44) 46 (48) 50 (52) 54 sts to spare ndl for sleeve, cast on (8) 8 (8) 10 (10) 10 new underarm sts, work (61) 67 (73) 79 (85) 91 sts for the back, transfer (44) 46 (48) 50 (52) 54 sts to spare ndl for sleeve, cast on (8) 8 (8) 10 (10) 10 new underarm sts, work (31) 34 (37) 40 (43) 46 sts for front.



**Back and front:**

= (139) 151 (163) 179 (191) 203 sts.

Insert marker on the 2 middle underarm sts. With main color and 6 mm circular ndl cont St-st back and forth inside 1 edge st at each side. When work meas approx (22) 23 (25) 26 (28) 29 cm (meas from after ribbing at the back and straight down), inc 1 st at each side of marked sts (inc = pick up yarn between 2 sts and k tbl this new st) = 4 sts inc.

Rep inc every 12 cm a total of 4 times  
= (155) 167 (179) 195 (207) 219 sts.

Cont until garment meas (72) 73 (75) 76 (78) 79 cm, (meas from after ribbing at the back and straight down or 6 cm before suitable length).

Change to 5 mm circular ndl and work 6 cm ribbing as follows: 1 edge st, p1, \*k1, p1 \*, rep from \*-\*, end with 1 edge st,

Cast off rib-wise.

